

## DID YOU KNOW?

THE 2020 NATIONAL ELECTRICAL CODE® REQUIRES ALL RESIDENTIAL DWELLINGS TO BE PROTECTED BY LISTED AND APPROVED TYPE 1 OR 2 SURGE PROTECTIVE DEVICES



IT IS ESTIMATED THAT THE AVERAGE HOME HAS \$15,000 WORTH OF EQUIPMENT THAT CAN BE DAMAGED BY SURGES

## RELAX WITH MAXIMUM PROTECTION FROM MERSEN'S SURGE TRAP® SPDs

### ◀ STLC240S025

- 25kA Surge Capacity
- Installed directly into residential load center
- Flexibility to fit into most load centers with 1" spacings (for compatibility list, visit [ep-us.mersen.com](http://ep-us.mersen.com))

Green visual  
end-of-life indicator



### SURGE-TRAP SPDs

- UL 1449 4th Edition Type 1 SPDs
- LED Indication
- Whole-house surge protection
- Made with Mersen's industry-leading TPMOV technology ensuring safety and reliability
- Meet NEC Article 230.67 requirements
- Up to \$25,000 Connected Equipment Warranty

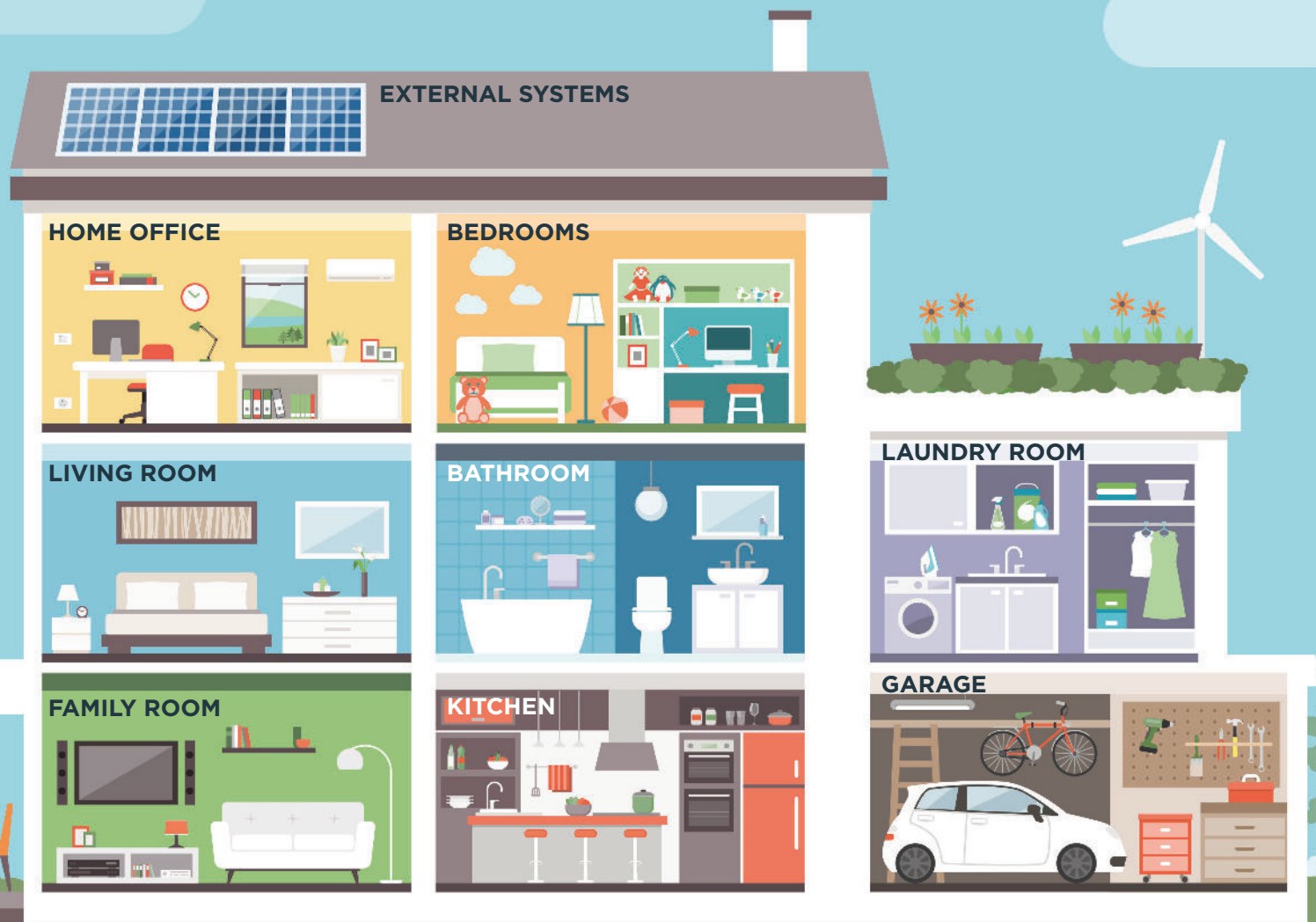


### ◀ STXH240S05

- CSA C22.2 Listed
- 50kA Surge Capacity
- NEMA 4X enclosure for Indoor/Outdoor use



# MERSEN COMPACT DEVICES PROTECT YOUR WHOLE HOUSE FROM DAMAGING SURGES MERSEN'S SURGE-TRAP® STLC AND STXH



## HOME OFFICE

- Computer
- Monitor
- Printer

## LIVING/FAMILY ROOM

- Entertainment System
- Television
- Smart Thermostat

## BEDROOMS

- Mobile Devices (tablets, cell phones, games)
- Television

## KITCHEN

- Stove
- Refrigerator
- Small Appliances
- Home Hub

## LAUNDRY ROOM

- Washer
- Dryer

## GARAGE

- Charging Station
- Power Tools

## UTILITY ROOM

- Furnace
- Water Heater
- HVAC

## UTILITY ROOM



## EXTERNAL SYSTEMS

- Rooftop Solar Panels
- Wind Turbine
- Security System

FLY-STLC-STXH-001 | GROWLL | 2500 | ©Mersen 2021. All rights reserved.

[EP.MERSEN.COM](http://EP.MERSEN.COM)

**MERSEN**  
Expertise, our source of energy