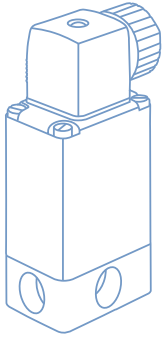




bürkert
FLUID CONTROL SYSTEMS

NEWSPAPER

SOLENOID VALVES



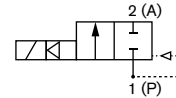
Solenoid Valve Systems from Burkert are suited to operate with neutral, aggressive and contaminated fluids, steam and other high temperature media. For contaminated media Burkert offers solenoid valves with isolating diaphragms.

Burkert's uncompromising quality is evident in our range of solenoid valves. They are available in stainless steel, brass or engineered plastics (PVDF, PVC, PTFE). A wide range of seal materials have been proven for use with acids, lyes, steam, corrosive and toxic fluids. Water valves are developed in a compact and water hammer free design. Burkert has introduced several HazEx™ Solenoid Valve Systems with global approvals.

0290

2/2-way hard-coupled Solenoid Valve NPT 1/2" - NPT 2", 0 - 232 PSI

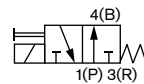
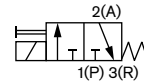
- Switches without differential pressure
- Operates on vacuum
- Process proven rugged and reliable design



0330

Pivot Operated 3/2-way Solenoid Valve in brass or stainless steel NPT 1/4", 0 - 174 PSI

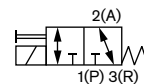
- Isolating separating diaphragm design
- Long service life
- Handles slightly contaminated fluids with ease
- Manual override as standard



0330

Pivot Operated 3/2-way Universal Solenoid Valve in brass or stainless steel NPT 1/4", 0-174 PSI max., 0 - 85 PSI

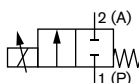
- Universal flow function
- Isolating separating diaphragm design
- Handles slightly contaminated fluids with ease
- Long lifetime
- HazLoc approvals upon request



2871

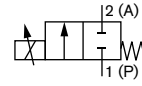
Direct-acting 2-way Solenoid Control Valve NPT 1/8", 0 - 174 PSI

- Excellent range
- Neutral gases and liquids
- Compact valve desing
- Orifice sizes 0.05 ... 2.0 mm
- Port connection 1/8" or sub-base



Direct acting 2-way standard solenoid control valve
NPT 1/8", NPT 1/4", 0 - 232 PSI

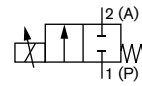
- Excellent range
- Neutral gases and liquids
- Compact valve design
- Orifice sizes 0.8 ... 6 mm
- Optional: Explosion-protected coil



2873

Direct-acting 2-way standard solenoid control valve
NPT 3/8", NPT 1/2", 0 - 362 PSI

- Excellent range
- Neutral gases and liquids
- Compact valve design
- Orifice sizes 2 ... 9.5 mm
- Optional: explosion-protected coil



2875

2/2 way Proportional Valve (motor-driven)
NPT 1/2" - NPT 1", 0 - 87 PSI

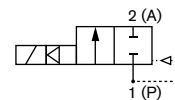
- Actuator isolated from flow path
- Excellent range and fast response times
- Low power consumption
- Orifice sizes 8 to 25 mm
- Versions: Standard, positioner, process controller



3285

2/2-way Servo-Assisted Solenoid Valve with Isolated Pilot
NPT 1/2" - NPT 2", 2.8 - 145 PSI

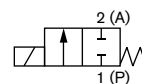
- Unique isolated technology for slightly contaminated fluids
- Independently adjustable open / close rate
- Easily configurable for normally open
- Manual override
- HazLoc approvals upon request



5282

Plunger Operated 2/2-way Solenoid Valve
NPT 1/8" or manifold mounting, 0 - 174 PSI

- Brass or stainless steel
- FKM seal as standard
- Slip over coil can be rotated in 4 x 90 degrees

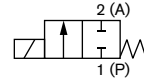


6011

7011

Direct-acting 2/2-way plunger valve NPT 1/8" or manifold mounting

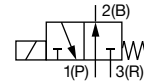
- Brass or stainless steel
- FKM seal as standard
- Slipped over coil system
- Simple and fast flange or manifold mounting



7012

Direct-acting 3/2-way plunger valve NPT 1/8" or manifold mounting

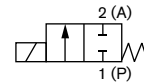
- Brass or stainless steel
- FKM seals as standard
- Slipped over coil system
- Simple and fast push-in, flange or manifold mounting



6013

Plunger Operated 2/2-way Solenoid Valve NPT 1/8" - NPT 1/4", 0 - 362 PSI

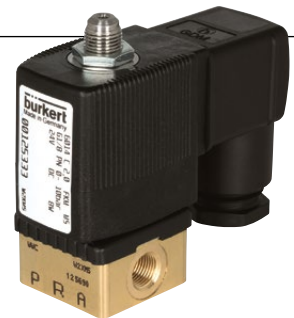
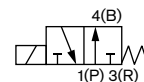
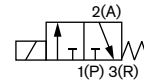
- Normally close
- With threaded body in brass or SS
- Slip over coil can be rotated in 4 x 90 degrees
- FKM seal material with high quality standard



6014

Compact Plunger Operated 3/2-way Valve NPT 1/8" & NPT 1/4", 0 - 232 PSI

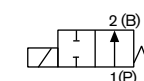
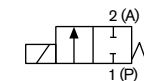
- Reliable double seated plunger operation
- Threaded or flange version
- High quality FKM seal as standard
- Slip over coil can be rotated in 4 x 90 degrees



6027

Direct-acting 2/2-way plunger valve NPT 1/4", 0 - 435 PSI

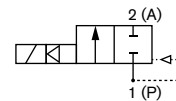
- Direct-acting, powerful valve with diameter of up to DN 12
- Vibration-proof, bolted coil system
- Increased leak-tightness with welded plunger guiding tube
- Explosion proof versions



2/2-way Solenoid Valve for liquids and gases

NPT 1/4" - NPT 1", 1.5 - 145 PSI

- Coupled spring diaphragm system opened
- Waterhammer free and low noise
- Flow-optimized housing and diaphragm geometry for high flow

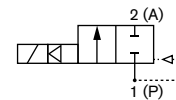


6213 EV

Servo-Assisted Solenoid Valve with Plunger Pilot

NPT 1/2" - NPT 2", 2.9 - 232 PSI

- Waterhammer-free
- Rugged molded diaphragm
- Compact design with high flow rates



6281 EV

Servo-Assisted 2/2-way Steam Piston Valve

NPT 1/2" - NPT 1 1/2", 0 - 145 PSI

- Up to diameter DN50
- Vibration-resistant, push-over coil
- Energy-saving double coil technology with Kick and Drop electronics



6407

PWM Control Electronics for Solenoid Control Valves

- Programmable digital electronics
- Converts an analogue input signal into a PWM output signal
- Adjustable PWM frequency
- Digital communication possible (bùS)
- Optional integrated time control and digital/analogue input signals



8605

Digital Timer

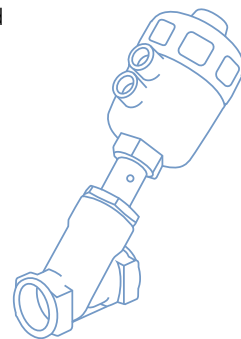
- Digital version with bright LED display
- Analogue version with LED illumination to indicate switching status
- Connection according to DIN EN 175301-803 (form A)
- Protection class IP65 (NEMA 4)



1087

PROCESS VALVES & CONTROL HEADS

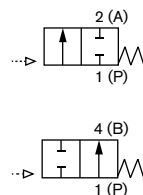
Making your life simpler, our ground-breaking innovation has created a remarkable range of attractive and hardworking valve elements which can be combined to give the user the best possible fit for purpose. With unlimited modularity, Bürkert saves you time by offering valves for media from slurries to steam and from de-ionized water to hydrochloric acid to offer peace of mind with the sure knowledge you have chosen experience and quality.



2000

On-Off Pneumatically Operated 2/2-way Angle Valve for Liquids NPT 1/2" - NPT 2 1/2"

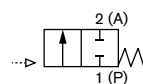
- Waterhammer-free
- High flow rates
- Self adjusting double packing
- Optical position indicator is standard
- Rotating power head to orient air control connections



2000

On-Off Pneumatically Operated 2/2-way Angle Valve for Steam and Gases NPT 1/2" - NPT 2 1/2"

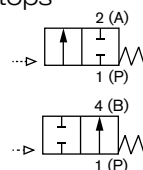
- Flow direction above seat
- PPS actuator for hot environments
- Self adjusting double packing
- High flow rates
- Rotating power head to orient air control connections



2100

On-Off Pneumatically Operated 2/2-way ELEMENT Angle Valve NPT 1/2" - NPT 2 1/2"

- Compressed air recycling control function with ELEMENT control tops
- Perfect for clean applications
- Wide range of accessories
- With flow direction below or above seat
- High flow rates
- High cycle life



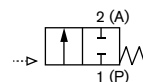
2101 / 2012

Pneumatically Operated 2/2-way Globe Valves 1/2" to 4"

- Flow direction below seat
- Long life
- Flow optimized stainless steel body 316L
- Perfect replacement for flanged ball valves

**Type 2012
Classic
DN65-100**

**Type 2101
ELEMENT
DN15-50**



Pneumatically Operated 2/2-way Diaphragm Valve ELEMENT for Decentralized Automation

Diaphragm size 1/2" to 2"

- Optimized flow and zero deadleg
- Diaphragm hermetically separates the fluids from the operating mechanism
- Easy integration of ELEMENT automation units
- SS body with clamp or weld ends
- Certified for pharmaceutical, aseptic, sterile and sanitary food applications



2103 On/Off

Pneumatically Operated 2/2-way Diaphragm Valve ELEMENT for Decentralized Automation

Diaphragm size 1/4" to 1-1/2"

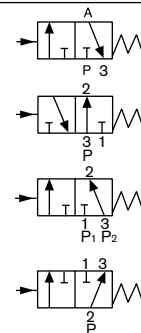
- Hydroformed pharmaceutical grade tube valve body
- Easy integration of automation units with ELEMENT
- Reduced mass up to 75% allows for optimized heating and cooling cycles
- Optimal design for hygienic environments



2103 TVB

3/2-way Globe Valve, pneumatically operated NPT 1/2" - NPT 1 1/2"

- Different flow circuit functions and control functions
- Long life actuator
- Optical display as standard in series
- Rotary actuator aligns the pilot air ports



2106

2/2-way Diaphragm Valve, Manually Operated, Forged Valve Body

OD Tube Butt Weld and Clamp Port Connections 1/4" - 2"

- Hermetical separation of fluid from operating mechanism by diaphragm
- Zero dead volume
- Various surface finishes
- Quality certifications FDA



3233

Manually operated 2-way Diaphragm Valve, Tube Valve Body OD Tube Butt Weld and Clamp Port Connections 1/2"-2"

- Light tube valve body
- Flow optimized body in stainless steel
- Zero dead volume
- Easy to weld



3233

Process automation for craft brewing

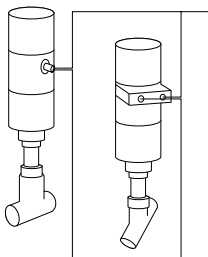
bürkert
FLUID CONTROL SYSTEMS

CLICK ME



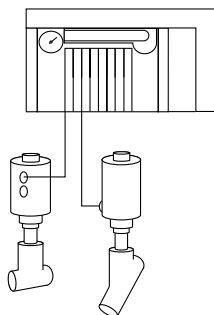
FOR MORE INFO

DECENTRAL, DISTRIBUTED, CENTRAL: Three smart concepts which almost automatically lead towards the single aim of smooth-running processes. Based on your specific requirements, we establish which of these concepts is the right one for you. Complex automation demands creative, tailor-made solutions. With the right approach, smart networking can become the intelligent hub of any production.



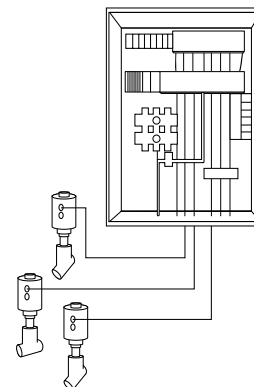
DECENTRAL

Clear, flexible, safe. Reduced energy costs and maximum cleanability make this concept stand out.



DISTRIBUTED

Compact, robust, extendable. Process-oriented control, quickly and easily configurable.



CENTRAL

Modular, individual, clear. The classic system combines control and information in one place.

Control Head

Universal attachment for hygienic process valves

- 3 switching points
- Color status display
- Manual override to be used with closed housing
- Communication interface AS-Interface (option)



8681

Control Head for decentralized automation of ELEMENT process valves

- Contact-free inductive valve position registration (teach function)
- Colored illuminated status display
- Integrated control air routing
- Fieldbus AS-Interface, IO-Link or bÜS (CANopen)



8691

Digital electropneumatic Positioner/Controller for the integrated mounting on process control valves

- Integrated PID Control (8693)
- Compact, robust stainless steel design
- Easy start-up by automatic X-Tune function
- Contact-free position sensor
- Integrated control air routing with spring chamber aeration



8692 / 8693

Digital Electropneumatic Positioner SideControl and Digital Electropneumatic Process Controller SideControl

- Compact and robust design
- Easy start-up by automatic X-Tune function
- Integrated diagnostic functions for valve monitoring
- Dynamic positioning system with no air consumption in controlled state
- Communications Protocols: EtherNet/IP, DeviceNet, Modbus TCP, PROFINET, PROFIBUS DP-V1 or bÜS (Bürkert System Bus)



8791 / 8792 / 8793

Angle Seat Valve System for on/off Control and Globe Valve System for on/off Control

- Long service life
- Easy integration of automation units with ELEMENT
- Stainless steel housing
- Suitable for 10 bar(g)/145 PSI steam



8801 / 2100 / 2101

Angle Control Valve and Globe Control Valve 2/2-way continuous control, 1/2" to 4"

- High cycle life and maintenance-free operation
- Stainless IP65 and 67, NEMA4 protection
- Excellent control characteristics and impact resistance
- Simple to install and commission



OEM Replacement Diaphragms

- Suitable for CIP (cleaning in place), SIP (sterilization in place) and vacuum applications
- Independently tested by BioProcess Institute to comply with ASME BPE Standard requirements for Standard Process Test Conditions (SPTC)
- Internationally certified for use in stringent pharmaceutical, aseptic, sterile and sanitary food applications



A Cleaner, Smaller Cabinet! More Flexibility with AirLINE Quick

Pneumatic control cabinets can be real mess. Even worse - punching in holes for pneumatic hoses can turn a slick stainless steel cabinet into Swiss cheese. Pairing Burkert's industry leading pneumatic valve islands with Allen-Bradley I/O, and an AirLINE Quick adapter plate tidies up what could otherwise be a rat's nest of tubing. Adding AirLINE Quick, available in stainless steel for hygienic applications or as a general purpose anodized aluminum version, to the already seamless integration of Rockwell Automation PLC and Burkert's Type 8644 valve islands, can also reduce the cabinet size needed as the connector plate can be mounted directly to the wall or floor of the cabinet - less tubing, fewer holes, smaller cabinet.

bürkert
FLUID CONTROL SYSTEMS

CLICK ME



FOR MORE INFO



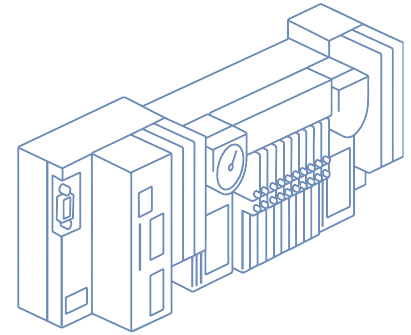
AirLINE Quick automation system type 8644 with interface module and I/O modules from Allen-Bradley

For more info, visit www.burkert-usa.com

PNEUMATIC ACTUATION

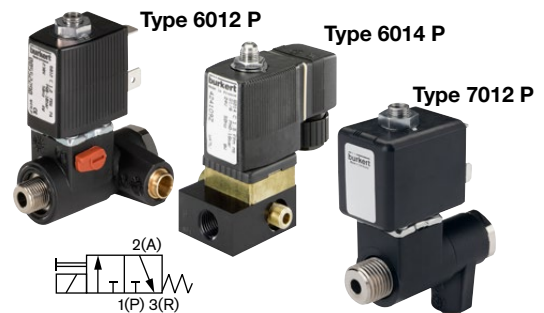
Pneumatic technology is known for high reliability, high force and torque generation and cleanliness. This makes it indispensable for efficient solutions for drives and actuators for control and regulation.

Bürkert has tamed the power of pneumatics and brings it to you in its most efficient form resulting in new standards in factory automation and process control.



Direct mounting pilot valve for pneumatic actuators NPT 1/8" or NPT 1/4"

- Simple to connect to valve and air supply
- Low power
- Tough and reliable
- Manual override as standard



6012 / 6014 / 7012 Pilot

Heavy Duty 3/2-way Pilot Valve Blocks NPT 1/4", 0-145 PSI

- Extremely rugged
- Slip over coil design
- Manual override

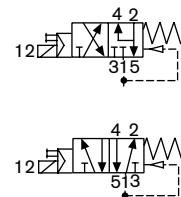


Shown with 2508 plugs

6014 Manifold

5/2 on 3/2-way Convertible Solenoid Valve for pneumatics, NAMUR version NPT 1/4", NAMUR

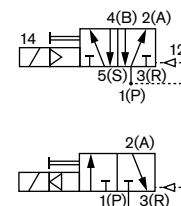
- High flow rate
- Low power consumption
- High switching reliability
- Manual override as standard
- Corrosion-resistant construction



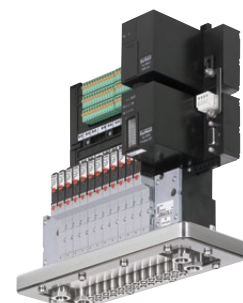
6519 NAMUR

Modular pneumatic valve unit AirLINE and AirLINE Quick

- Compact design
- Modular configuration
- Cost savings in the control cabinet with AirLINE Quick
- Simple exchange of valves



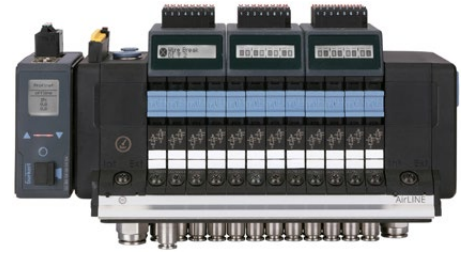
Type 8640 with AirLINE Quick



8640

AirLINE - the valve island optimized for process automation

- Compact design
- Easy diagnostics by LC display
- Process reliability through pneumatic functions
- Optimized for installation at the bottom of the control cabinet



AirLINE Field - the valve island

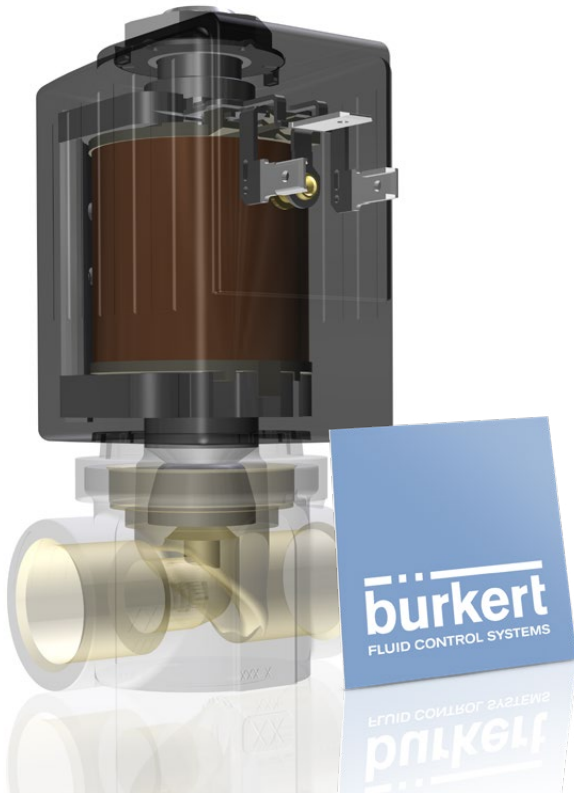
- Compact field-mount design
- Easy to read LCD display
- LED Status indication
- Supports IO-Link (AOI), CANopen or bus
- IP 65/67 wash-down rated
- Configurable with COMMUNICATOR software



Standard Panel

16, 24 and 48 station manifolds double 3/2-way NC

- Reduced space requirement in the control cabinet
- Makes it possible to use more compact control cabinets
- Hose connections directly at the bottom of the switch cabinet



All inclusive!

What you see here is the essence of universality. Perfect for whenever you require a direct-acting 2/2-way solenoid valve. It's the one valve you can use for each and every occasion. Built for both neutral and slightly aggressive media – powerful enough to work with dry gases or steam. Three design elements ensure you get maximum performance: its highest flow rates, its long service life and its top reliability. All of which come standard. And it's no problem at all if your processing environment demands additional features – from more pressure and a different supply voltage, to an Ex version. Simply universal: our solenoid valve 6027.

CLICK ME

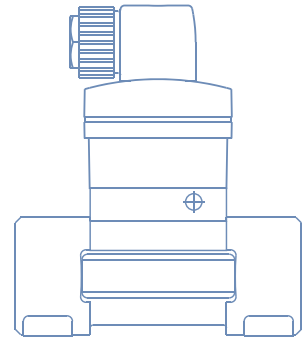


FOR MORE INFO

We make ideas flow.

SENSORS, TRANSMITTERS & CONTROLLERS

For more than twenty years we have been providing our customers with sensors, transmitters and controllers where fit-for-purpose is optimized. From the outset our clients, large and small, have appreciated the practical orientation, man-machine interface and architecture of the sensor range characterized by extremely simple installation, commissioning, calibration and teach functionality. Standardized layout, electrical interfaces, process connections. and, above all, intuitive menus, make the whole range simple to work with.



Flow Transmitter/Pulse Divider

- Microprocessor-controlled electronics
- 2-wire (4-20 mA) / 3-wire (NPN/PNP) - operation
- Removable display unit
- Pluggable to flow sensor 8020 and 8030



8022

Batch Controller for panel or wall mounting 7 batch sizes, 2 relay outputs

- Controls 7 batches automatically
- Fast fill and fine control for accuracy
- Shows both flow rate and volume



8025 / SE35
Batch controller

Insertion Flow Transmitter for continuous measurement For pipe > 2", 0-145 PSI

- Up and download of the data through removable display
- Pipe sizes 1/2" to 16"
- Preferably, for pipe diameter greater than 2"



8026

INLINE Flowmeter for continuous flow measurement For use with fitting S030, 1/2" to 2"

- Turn and lock bayonet fitting isolates sensor from media
- Economic integration in pipe systems
- 3-wire frequency version for direct connection to PLC (PNP and NPN)
- Connection to Burkert remote electronics



8030 / SE30

8036 / SE36

In-Line Flow Transmitter for continuous measurement

For use with fitting S030, 1/2" to 2"

- Up and download of the data through removable display
- Automatic calibration: TEACH-IN
- All output signals without presence of flow



8041

Blind INSERTION Magmeter

For use with fitting 1/2" to 16"

- Solid state technology
- Clean in place (CIP)
- FDA compliant



8045

INSERTION Magmeter with display

For use with fitting 1/2" to 16"

- Simple to read display
- Easy push button menu
- Clean in place (CIP)
- FDA approved



8051 / 8055 / 8056

Full bore INLINE Magmeter

1/2" to 6", Up to 232 PSI

- Full bore section
- High frequency sampling
- Continuous measurement or batch control



Shown is the remote flanged sensor and the hygienic clamp compact version

8098

FLOWave SAW Flowmeter

- Without any parts in the measuring tube
- Conforms to hygienic requirements CIP/SIP capable
- Ideal for liquids with low or no conductivity
- Compact, lightweight and low energy consumption
- Digital communication, parameter setting via communicator, display and Wi-Fi





8110 / 8111

Tuning-Fork Level Switch**1/2", 3/4" or 1" NPT and clamp 2"**

- For universal use as overfill or dry run protection system
- Hygienic surface finish
- Extension tubes available



8177

Ultrasonic Level Transmitter for General Application
NPT and G thread process connection

- Two-wire version
- Reliable non-contact measurement
- HART communication



8188 / 8189

Microwave Level Transmitter for General Application

- Universal level measurement device for fluids
- Liquid interface measurement
- Insensitive to dust and steam
- 4-20 mA/HART - 2 wires, ATEX/IECEx approvals Ex



8202 Element

pH Transmitter

- Accepts all standard pH probes
- Removable programming puck
- Data upload/download via puck
- With temperature compensation
- Diagnostic function



8203

pH Probes**For use with 8202 pH transmitter**

- For many different types of installations and applications
- Modular device designed for the measurement of: - the pH in clean liquids or liquids containing solids, sulfides or proteins



Conductivity transmitter with removable operating unit

- Intuitive menu structure
- Removable programming puck
- Data upload / download via puck
- Diagnostic function



8222 Element

Inductive conductivity meter

- Configurable outputs: up to 2 transistor and up to 2 analogue 4-20 mA outputs
- Removable backlighted display
- Simulation of process values and diagnostic functions
- Sensor-versions available with PEEK, PVDF or PP



8228

Intelligent Sensor/Switch/Display

- Accurate, reliable pressure switching
- Switch for alarm or event logging
- Bar graph display for local monitoring



8311

Pressure Measuring Device

- Ceramic/thick film measurement cell
- 2-wire version for 4-20 mA output
- Compact, stable construction for the highest operational reliability



8316

Temperature Transmitter/Switch with display

- Menu-guided configuration
- Wide choice of connections and outputs
- Large digital display
- Bar graph display for local monitoring
- Continuous On/Off control
- 2-wire transmitter



8400

8619

Multi-channel, multi-functional transmitter/controller 1/4" DIN Panel Mount

- Flexible analytical and flow transmitter
- Compatible with most flow , pH/ORP, chlorine and conductivity sensors
- Intuitive programming
- SD card for data logging and upload/download



S022 Fittings

Fittings for 8202 & 8222 pH and Conductivity Sensors Tee Fittings and Adaptors

- Simple installation guaranteed
- Range of chemically compatible materials
- Modular concept for pH, ORP and conductivity



S077

Positive Displacement Sensor Fitting for continuous flow measurement DN15 - DN100

- INLINE Quarter-Turn technology
- Electronics available for indication, monitoring, transmitting, On/Off control and batch control



S030 / S020

S030 and S020 flow fittings 1/2" to 14", 0-232 PSI

- Straight thru tube assures maximum accuracy
- Wide range of materials and connections
- Unique INLINE version isolates medium from measuring device

S020 PVC



S030 PVC

CLICK ME



FOR MORE INFO

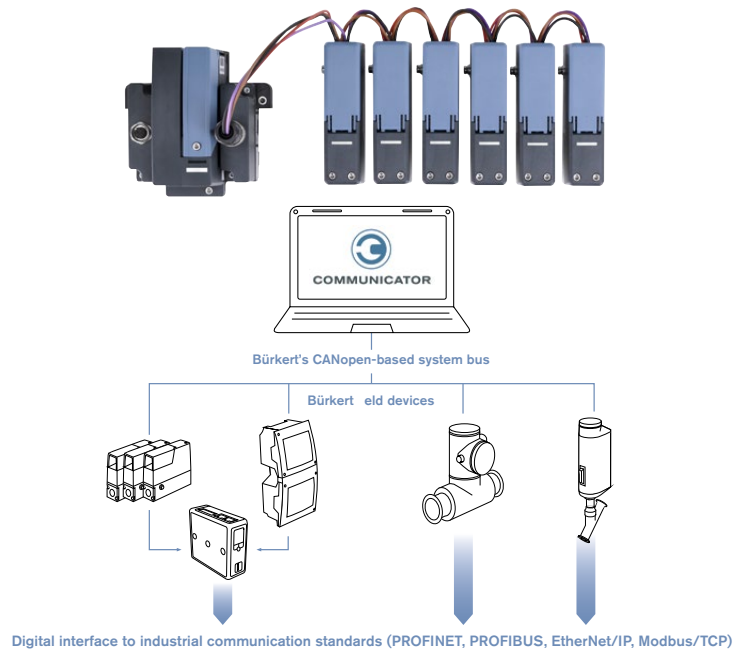
EDIP Efficient Device Integration Platform

AUTOMATION A LA CARTE

A direct feed to the processor gives you access to all the data
- choose what you want to know

Communication – büS

The proprietary büS (Bürkert system bus) is a standardized digital interface of Bürkert devices. It mainly complies with CANopen, and is always downward compatible to it. The following key characteristics



PVD made simple.

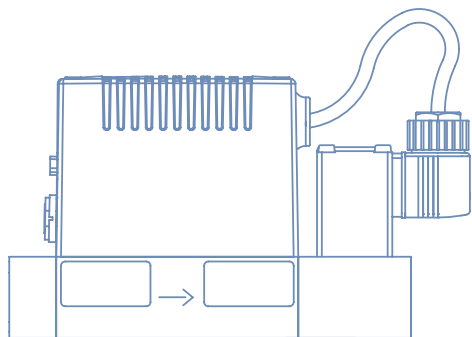
Life is complicated enough. So make it simpler — with the new solutions for surface coating from Bürkert — designed specially for the needs of the PVD industry in mind, featuring precise repeatability and multiple opportunities for field-bus connection. Perfect for optimal process yields, high quality and your peace of mind.

A star in our system: **The MFC 8742.**

Quick to respond like no other.



MASS FLOW



Bürkert's Mass Flow Meters (MFM) and Mass Flow Controllers (MFC) rank among the most sought after components in the business. With a well established position in various processes all over the world, they set the standard in the measurement and control of mass flow rates.

Reproducible accuracy and precision, with a coherent price-performance ratio – these are the exceptional characteristics of Bürkert's thermal MFMs/ MFCs. Our mechatronic devices unite the functionality of several components at once, in an efficient compact structure with no moving components in the gas flow. Compactness and device intelligence make gas handling so much easier.

8741

Mass Flow Controller (MFC)/Mass Flow Meter (MFM) for Gases

**Nominal flow ranges from
0.010 IN/min to 160 IN/min**

- High accuracy and repeatability
- Very fast response times
- Easy device exchange through configuration memory
- Available in 2 versions: 8741 Standard and 8741 büS/CANopen



8742

Mass Flow Controller (MFC)/Mass Flow Meter (MFM) for Gases

**Nominal flow ranges from
0.010 IN/min to 160 IN/min**

- High accuracy and repeatability
- Protection class IP65 and IP67
- Optional: ATEX II Kat. 3G/D
- Communication via fieldbus based on CANopen



8745

Mass Flow Controller (MFC)/Mass Flow Meter (MFM) for Gases

**Nominal flow ranges from
20 IN/min to 2500 IN/min**

- High accuracy and repeatability
- Communication via standard signals or Industrial Ethernet
- Easy device exchange through configuration memory



8746

Mass Flow Controller (MFC)/Mass Flow Meter (MFM) for Gases

**Nominal flow ranges from
20 IN/min to 2500 IN/min**

- High accuracy and repeatability
- Communication via fieldbus based on CANopen
- Optional: ATEX II Cat. 3G/D
- Electromagnetic and motor-driven valve actuation available



CLICK ME

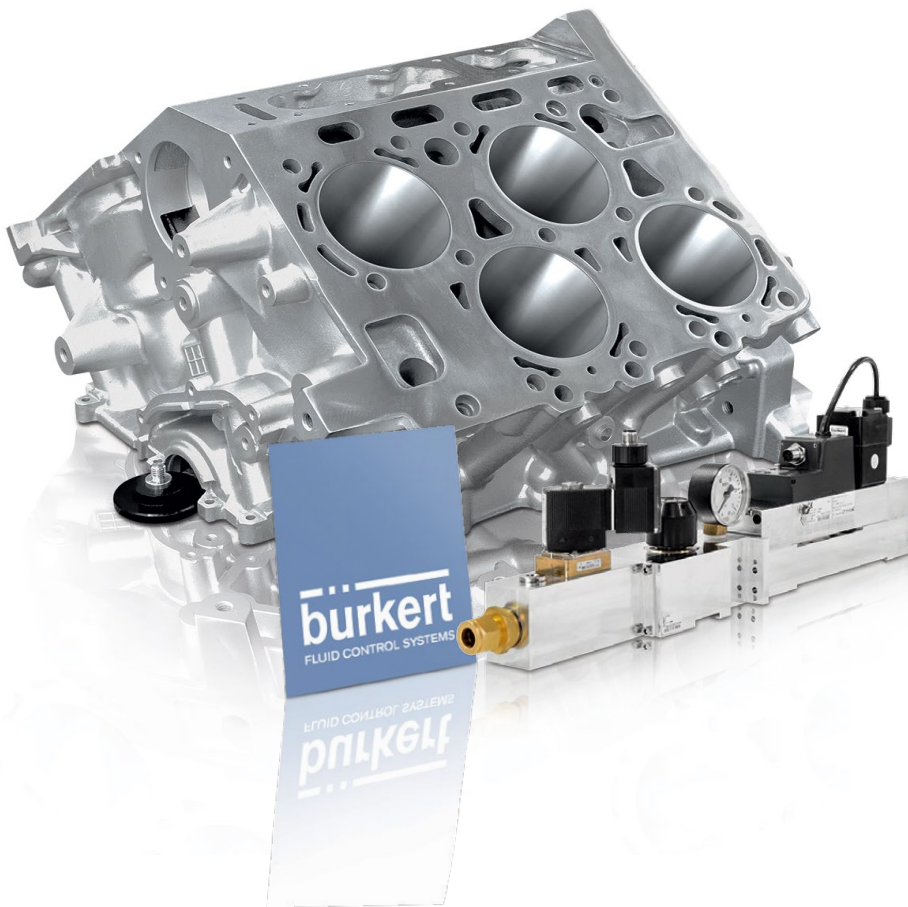


FOR MORE INFO

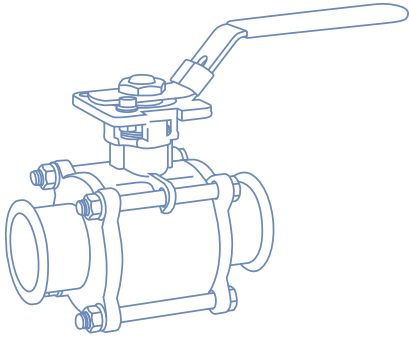
Surface treatment made simple.

Here to spray - with innovative ideas: When it comes to efficient surface treatment, thermal spraying is one of the most flexible options. However, parameters such as gas dosing for the powder delivery as well as the set melting temperature of the coating material must be precisely controlled. This is where our mass flow controllers come in to spray. We'll design a solution for your spraying technology that is tailored to your needs. Our modular principle, compatible with Industry 4.0, incorporates plug-and-play solutions that comply with all requirements and guarantee optimum process reliability.

Spraying technology solutions by Bürkert:
system-based mass flow controllers.



BALL VALVES



Bürkert has packaged Quarter Turn valves and technologies for modular simplicity. First dividing quarter turn into three basic components; the valve, an actuator and top works – Bürkert builds a complete solution. Automation-ready valves, with high quality actuators and unbeatable top works solutions. A modular, functional high quality quarter turn package. Configure your perfect package using our online configurator tool.

Ball Valve Configurator



Flanged ball valves

Ball Valves in cast 316 SS 2-way Split body construction

- 275 PSI WOG
- 150lb RF ANSI flange
- Full port to Sch 40 pipe
- Bolted split body
- Range of seal options
- Blow-out proof stem with self adjust packing
- ISO 5211 direct actuator mount (6"+ indirect)



Butt weld, NPT, and socket weld ball valves

Ball Valves in cast 316 SS 2-way 3-piece construction

- 1000/800 PSI WOG
- Thread, socket and butt weld ends
- Full port to Sch 40 pipe
- Semi lugged body
- Range of seal options
- Blow-out proof stem with self adjust packing
- ISO 5211 direct actuator mount



Clamp and tube end ball valves

Ball Valves in cast 316 SS 2-way 3-piece construction

- 1000/800/600 PSI WOG
- US Clamp and US Tube Weld End
- Full port to US OD Tube
- Semi lugged body
- Blow-out proof stem with self adjust packing
- ISO 5211 direct actuator mount





burkert
FLUID CONTROL SYSTEMS

Looking to configure your perfect Quarter Turn Package?

Use the simple Ball Valve Configurator to select item number with the right parameters and call-in your order for Quick Delivery Options - even faster than the delivery times offered online.

CLICK ME



FOR MORE INFO

Burkert Fluid Control Systems

11425 Mt. Holly-Huntersville Road
Huntersville, NC 28078

Toll-free: 1-800-325-1405
International : 704-504-4440
Fax: 949-223-3198

sales.us@burkert.com
www.burkert-usa.com