

B-LINE
SERIES

B-Line series product line overview

The support you rely on



EATON

Powering Business Worldwide

Improve efficiency, minimize complexity and maximize

At Eaton, we work with our customers to understand their day-to-day challenges so that we can deliver innovative B-Line series products, services and tools that help customers minimize complexity, increase efficiency, and maximize their profit.

Table of contents



*Productivity IQ Overview -
Pages 2 and 3*



Electrical - Pages 4 and 5



Mechanical - Pages 6 and 7



Communications - Pages 8 and 9

B-Line series products

Innovative products that help save installation time and materials

From innovative electrical and mechanical products to data and communication solutions, Eaton offers a wide variety of B-Line series time-saving and material-saving products that help customers speed up installations.

Below are just a few examples of B-Line series products that help increase productivity on the job-site. The following product pages feature all of our products including many time and material saving solutions.

Eaton.com/Productivity-IQ

Installs up to 50% faster

Compared to traditional strut trapeze solutions, the B-Line series conduit trapeze support solution eliminates the need for conduit clamps at every support location; the result is a part reduction of up to 75%.

The versatile z-shaped design of the B-Line series conduit trapeze support allows for quicker installation and support of multiple sizes of conduit, MC/AC cable, cable tray and other accessories, such as electrical boxes.

Eaton.com/conduit-support

Save up to 15 seconds per cycle!

With a simple push, the new Hands Free Stud Mounting Bracket holds itself onto the stud until secured with a screw. Innovative features include Marty Mouse ears to retain the box when plaster ring is removed, and Rabbit Ears to attach a plaster ring for data devices without using a box.

Eaton.com/hf-bracket

Cable ladder that helps pay for itself

As the cost of structural steel continues to increase, the impact of reducing the quantity of supports on a projects can offset the cost of the cable ladder system all together.

Through extensive laboratory testing, Eaton has determined that its metallic cable ladder systems are able to be supported by fewer structural steel supports than currently recommended by NEMA VE-2. Our engineering expertise and unique product features have allowed us to develop a cable ladder system with industry-leading strength and stability that can help reduce the number of structural steel supports by up to 66% without diminishing the load carrying capacity of the system.

Eaton.com/SSS

**For more information visit
Eaton.com/Productivity-IQ**

Productivity IQ >>

Work smarter, not harder.

your profit with B-Line series products, services and tools

B-Line series services

Eaton B-Line series services and tools to help increase productivity from the start to the end of your project. Let us show you how we can help you increase productivity from the start to the end of your project.



Engineering calculations



Seismic approvals and inspection support



Product kitting



Drawing and submittal creation



Cut-to-length strut



Modified enclosures

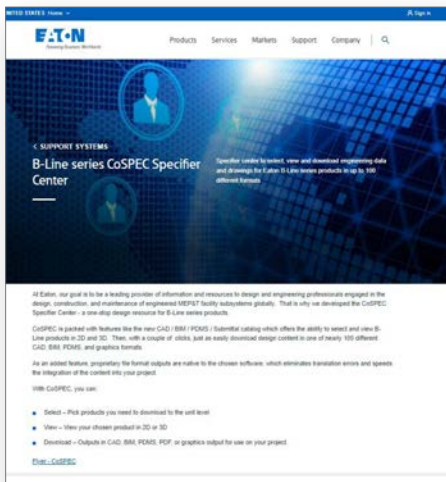


Take-off services



Pre-fabricated assemblies

For technical support, contact B-LineTechnicalSupport@Eaton.com.



B-Line series tools

CoSPEC specifier center

CoSPEC™ is a one stop resource design center for engineering professionals engaged in the design, construction and maintenance of mechanical, electrical, plumbing and data/communication facility subsystems.

With nearly 100 different CAD, BIM, and graphic formats, customers can easily select, view and download products in 2D and 3D.

Eaton.com/CoSPEC

AutoDesk MEP files

Your one-stop solution for AutoDesk fabrication of B-Line series pipe hangers.

- Pipe hanger models include: Clevis hangers, band hangers, pipe clamps, riser clamps, rollers, shields, etc.
- Compatible with Autodesk 2013 to 2016
- Harrison ID code for pricing included

Eaton.com/phautodesk

TOLBrace fire protection solution software

Our user-friendly software assists designers in evaluating seismic brace orientations, structural attachments and calculating appropriate load capacities for fire sprinkler systems. TOLBrace™ also creates a complete submittal package, in conformance with NFPA, UL, FM, OSHPD, IBC or CBC.

Eaton.com/TolBrace

Productivity IQ Vlog

Our vlog site is packed with educational and instructional videos to learn how to become more productive before, during and after the sale.

Eaton.com/Productivity-IQ-vlog



For more information visit
Eaton.com/Productivity-IQ-vlog

Electrical products

As a leader in the electrical market, our products fully support and protect electrical subsystems. We are dedicated to meeting or exceeding industry standards in every product we make.

Cable support systems

Eaton is a leading manufacturer of B-Line series cable support systems. Our many cable supports offer distinct advantages over conduit, including flexibility for simple moves, adds and changes; easier maintenance; scalability for future growth; and lower total installed cost.

NEMA cable management systems

Designed for a variety of environments from light commercial to heavy industrial, we offer a NEMA cable support systems for industrial applications in stainless steel, fiberglass, hot dip galvanized steel, aluminum and pre-galvanized steel.

Eaton.com/cabletray



Redi-Rail system

Optimized to perform to NEMA 12B load requirements, the Redi-Rail™ system is designed for maximum installation flexibility. Pre-punched side rails with strategically located holes allow for easy splicing after cutting and the ability to add, remove, and relocate mechanically fastened rungs.

Eaton.com/redi-rail



KwikSplice cable tray

The KwikSplice™ system is a light-weight, yet durable cable management system that is rated for NEMA 12A and 12B load classes. The system's innovative two bolt splice connection, universal fitting, and tool-less accessories help deliver up to 50% savings on materials and installation time. The system is ideal for commercial, light-industrial, data center, healthcare, education and government cable management applications.

Eaton.com/kwiksplice



FLEXTRAY wire basket

This flexible, field-adaptable cable management solution combines strength, lightweight construction, depth, and unmatched adaptability to support cables in a fast and economical way. Flextray™ can be cut and bent on the job site, allowing cable runs to be adjusted as needed.

Eaton.com/flextray



Cable cleats

Our cable cleats are designed to support and retain cables within your cable tray system in everyday conditions. More importantly, they help prevent damage in short circuit conditions.

Eaton.com/cleats



Metric cable ladder (MCL)

Designed to be in compliance with IEC standards, MCL cable ladder helps decrease project cost and engineering complexity by reducing the number of structural steel supports needed for cable ladder systems in heavy industrial environments.

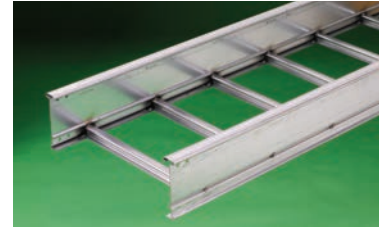
Eaton.com/cabletray



High performance ladder (HPL) series cable ladder

Designed to literally save tons in overall weight for offshore and modular projects, this patent-pending cable ladder offers a unique combination of low weight and high strength. This high strength to weight ratio allows for increased load capacities and keeps project weight budgets in balance.

Eaton.com/hpl



NEMA steel cable tray



Redi-Rail system



KwikSplice NEMA aluminum cable tray



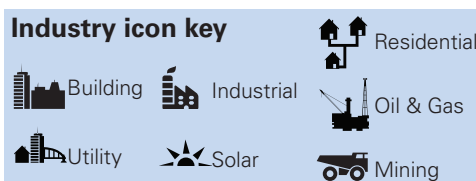
Flextray cable management



Cable cleats



IEC metric cable ladder



Industrial and commercial electrical enclosures and wireway systems

At Eaton, we offer solutions to meet our customer requirements. From standard stock products to modified and custom enclosures, our team of enclosure experts are available to help you choose the enclosures you want, when you need them.

Eaton.com/ENC



TOLCO seismic bracing

Our seismic bracing products save up to 50% on installation and reduce complexity compared to standard strut hinge solutions. The TOLCO™ seismic bracing products meet UL, FM and OSHPD standards and are ideal for new and retro-fit applications. Our engineering team is always ready to help design a code compliant seismic support solution for your project.

Eaton.com/tolco



Meter mounting

Our meter mounting enclosures are UL listed for secure service entrance applications from 20 to 2000 amps at 600V maximum. Meter mounting product families include Single Position (residential and light commercial), Multi-position (multi-unit residential and commercial), Meter Mains/Disconnects, Transformer Metering Enclosures, Distribution Equipment (including bussed gutters and termination cabinets) and Commercial Meter Pedestals.

Eaton.com/metering



Rooftop supports

Manufactured from 100% recycled rubber, the Dura-Blok™ rooftop support system is designed to support electrical, mechanical and communications equipment. Plus, it also features roof friendly soft composite construction, and does not require the use of a supplemental rubber pad.

Eaton.com/dura-blok



Strut systems

We offer the broadest range of traditional Strut systems, 4Dimension™ strut, and accessories in the industry, with innovative products that can also save an installer valuable time. Our products can easily be field fabricated into supports for electrical systems, as well as for many other custom support needs.

Eaton.com/strutsystems



4Dimension strut system

Eaton's 4Dimension™ strut system changes how installers build and install support systems for electrical, mechanical, plumbing, data centers, and HVAC in new and retrofit commercial and industrial applications. These revolutionary strut profile designs and innovative accessories help installers compress project schedules and cut costs without sacrificing load while increasing configuration flexibility. With multi-sided functionality, the 4Dimension strut system delivers up to 50% savings on materials and installation time.

Eaton.com/4Dimension



Conduit trapeze support systems

BCTS is a lower total installed cost solution with up to 50% time-savings over traditional strut trapeze. This versatile Z-shaped design supports multiple sizes and types of conduit, MC/AC cable, cable tray and attachment of other accessories such as electrical boxes.

Eaton.com/conduit-support



Spring steel fasteners & pre-fab assemblies

Designed to save time and money on your next project, B-Line series spring steel fasteners provide tested solutions for conduit, cable, box and light fixture installations that can speed up every part of the rough-in process. Choose from labor-saving solutions like cable hooks, BB5-HF hands free box bracket, or our KwikWire™ hanging system and accessories. Accelerate the rough-in stage of your project - with Ruff-IN™ pre-fab assemblies.

Eaton.com/fasteners



Technical furniture

Command and control consoles offer electronic height-adjustable work surfaces for sit-to-stand applications and superior power and cable management for easy service access.

Industrial workbench systems maximize vertical storage space and offer rugged durability for heavy-duty applications.

Eaton.com/furniture



Electrical enclosures



TOLCO seismic bracing



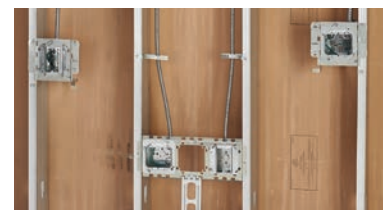
Dura-Blok Rooftop Supports



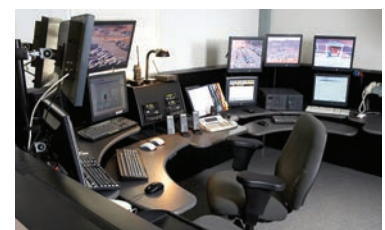
4Dimension strut system



Conduit trapeze support



Spring steel fasteners



Furniture for technical workspaces

Mechanical products

Eaton offers an extensive line of mechanical and fire protection supports, that is backed by our exacting standards in design, engineering and manufacturing.

Pipe hangers

Manufactured from carbon or stainless steel and available in a variety of finishes, our pipe hangers and supports are suited for everything from indoor commercial to highly corrosive industrial applications. All of these products meet or exceed the MSS or Federal Specifications, and many are UL and FM listed. Pipe hanger and support products include beam clamps, pipe hangers, pipe clamps, pipe rollers, pipe supports, concrete inserts and support brackets.

Eaton.com/pipehangers



Rooftop supports

Manufactured from 100% recycled rubber, our Dura-Blok™ rooftop support system is designed to support pipes, HVAC equipment and ducting. It also features roof-friendly soft composite construction, and does not require the use of a supplemental rubber pad.

Eaton.com/dura-blok



Traditional strut systems

We offer the broadest range of Traditional Strut Systems and accessories in the industry, with innovative products that can also save an installer valuable time. Our products can easily be field fabricated into supports for electrical systems, as well as for many other custom support needs.

Eaton.com/strutsystems



Dura-Blok rooftop supports

4Dimension strut system

Eaton's 4Dimension™ strut system changes how installers build and install support systems for electrical, mechanical, plumbing, data centers, and HVAC in new and retrofit commercial and industrial applications. These revolutionary strut profile designs and innovative accessories help installers compress project schedules and cut costs without sacrificing load while increasing configuration flexibility. With four-sided functionality, the 4Dimension strut system delivers up to 50% savings on materials and installation time.

Eaton.com/4Dimension



Spring steel fasteners

Designed to save time and money on your next project, B-Line series spring steel fasteners provide tested solutions for pipe, tube, and HVAC installations that can speed up every part of the rough-in process. Choose from labor-saving solutions like BB2 pipe clamps, Bang-It+ anchors and our KwikWire™ hanging systems.

Eaton.com/fasteners



4Dimension strut system



Pipe hangers



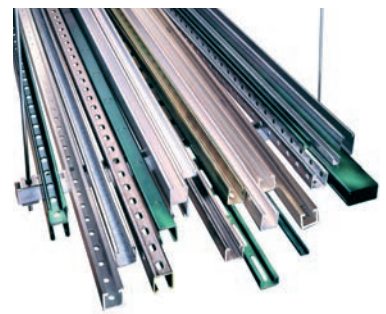
Pipe hangers and supports



BB2TCP/BB2TCT pipe clamps and insulator sleeves



Spring steel fastener anchors



Traditional strut systems

Safety grating

Our Grip Strut™ safety grating provides reliable, safe footing for work platforms, catwalks, rooftop walkways and stair treads in mechanical service areas. Heavy Duty Grip Strut™ walkway systems (with increased load capacity) can offer cost savings up to 50% compared to traditional bar grating. And GrateWalk™ rooftop walkways help extend roof life, and reduce maintenance caused by foot traffic.

Eaton.com/grating



TOLCO seismic bracing

Our seismic bracing products save up to 50% on installation and reduce complexity compared to standard strut hinge solutions. The TOLCO™ seismic bracing products meet UL, FM and OSHPD standards and are ideal for new and retro-fit applications. Our engineering team is always ready to help design a code compliant seismic support solution for your project.

Eaton.com/tolco



Cable tray

Available in a variety of different sizes and materials, such as aluminum, steel, stainless steel, and fiberglass, cable tray is a robust product that is suited for both internal and external environments. When accompanied with B-Line's seismic bracing and bolted framing products, cable tray systems can easily be utilized in heavy seismic active zones. Unlike conduit, cable tray can be utilized for future expansions all while requiring far fewer supports resulting in a lower total installed cost.

Eaton.com/cabletray



Snap 'N Shield solution

Now you have multiple options to help prevent insulation and pipe damage that may lead to costly leaks. Snap 'N Shield is designed to snap onto either strut channel or to pipe hangers. All options help eliminate movement while allowing for natural contraction and expansion of the pipe and insulation. Each solution requires no tools to be attached, which speeds up the installation process, delivering a lower total installed cost.

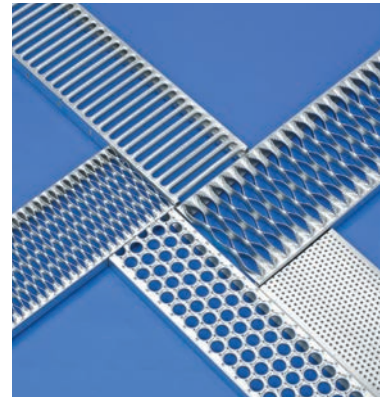
Eaton.com/snap-n-shield



Snap 'N Shield on strut support



Snap 'N Shield on clevis & band hanger



Safety grating

Industry icon key



Utility



Solar



Residential



Building



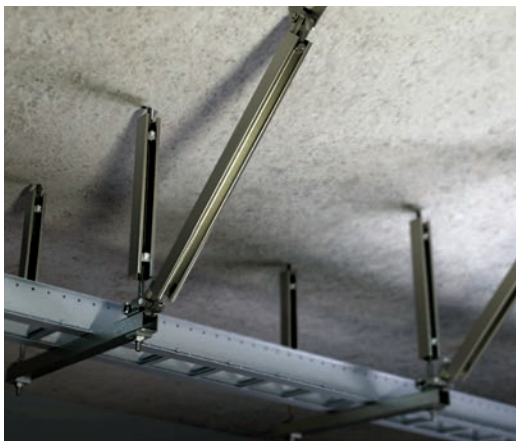
Industrial



Oil & Gas



Mining



Cable tray, TOLCO seismic bracing and strut



Dura-Blok rooftop supports



TOLCO seismic bracing

Communication products

As a leading manufacturer of rack and runway support systems and enclosures for network closets, server rooms and data centers, our products protect critical network infrastructures while they route the cabling throughout your building. We offer multiple product choices to help support, protect, power, enclosure and connect (SPEC) your critical IT and communication assets.

Cable support systems

We are a leading manufacturer of cable support systems in North America. Our many families of cable tray systems offer distinct advantages over conduit, including flexibility for simple moves, adds and changes; easier maintenance; scalability for future growth; and lower total installed cost and total cost of ownership.

Flextray wire basket

This flexible, field-adaptable Flextray™ cable management solution combines strength, lightweight construction, depth, and unmatched adaptability to support cables in a fast and economical way. Flextray can be cut and bent on the job site, allowing cable runs to be adjusted as needed.

Eaton.com/flextray



UPS backup power solutions

Managing a UPS has never been easier with the 9PX UPS; even in virtualized environments. UPS offers premium backup power and scalable battery runtimes for servers, voice/data networks and storage systems. Along with advanced LCD screen interface, the 9PX UPS is ideal in both rack and stand-alone installations. It is a robust power management software solution.

Eaton.com/9PX



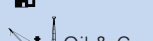
RCM+ rack enhancement

Enhanced with quarter-turn locking latch system allows the rack to be opened from either side, or completely removed and reinstalled with just a quick twist of the latch.

Eaton.com/rcm-plus



Industry icon key



Redi-Rail system

Optimized to perform to NEMA 12B load requirements, the system is designed for maximum installation flexibility. Pre-punched side rails with strategically located holes allows for easy splicing after cutting and the ability to add, remove, and relocate rungs.

Eaton.com/redi-rail



Rack security products

Designed to provide a first layer of security for a range of data centers applications in a wide array of markets – including finance, healthcare, government, institutional and retail. Products such as our server boot and patch panel protectors provide an ideal choice for those who do not have the space to secure an entire room or use an enclosed cabinet.

Eaton.com/datacenter



Network equipment supports

As a leading manufacturer of Voice/Data/Video equipment supports, our broad product offering includes steel and aluminum equipment racks, cable runways, cable management products, plus a full line of cable management accessories.

Our High Density Network Rack (HDNR) series offers an innovative open-frame rack solutions for cable intensive environments with accessories designed to maintain airflow integrity between racks. Leveraging Eaton's patented 4Dimension™ Strut, HDNR is able to provide adjustable equipment mounting rails, airflow accessories, in-rack cable management to deliver industry-leading flexibility, density and reliable mounting of critical network equipment.

Eaton.com/datacenter



Flextray cable management



UPS back-up power solutions



Redi-Rail system



Network racks

Electronic enclosures – floor standing & wall mount

Whether you have a network closet, server room, or multi-tenant data center, Eaton provides an easy-to-configure solution for IT equipment storage. The RS Enclosure features optimized mounting for power distribution, flexible cable management, security provisions, and is available in application specific configurations.

In addition, we offer wall mount V-Line enclosures for network closet, communications, and small office requirements

Eaton.com/RS



Tolco seismic bracing

Our seismic bracing products save up to 50% on installation and reduce complexity compared to standard strut hinge solutions. The TOLCO™ seismic bracing products meet UL, FM and OSHPD standards and are ideal for new and retro-fit applications. Our engineering team is always ready to help design a code compliant seismic support solution for your project.

tolco.com



Spring steel fasteners

Designed to save time and money on your next project, B-Line series Spring Steel Fasteners provide tested solutions for conduit, cable, box and light fixture installations that can speed up every part of the rough-in process. Choose from labor-saving solutions like cable hooks, or our KwikWire™ hanger system and accessories and QuikFix™ fastening systems.

Eaton.com/fasteners



J-Hook color id clips

J-Hook Color ID Clips are ideal for use in data centers and light-duty commercial cable management applications where there is a need for color designation. Ideal for new and retro-fit applications, these simple solutions are designed to snap onto existing B-Line series J-Hook products allowing installers and inspectors to verify that cables are running in their correct, designated pathways.

Eaton.com/color-id



Strut systems

We offer the broadest range of traditional strut systems and accessories in the industry, with innovative products that can also save an installer valuable time. Our products can easily be field fabricated into supports for data/comm systems, as well as for many other custom support needs.

Eaton.com/4Dimension



Technical furniture

Command and control consoles offer electronic height-adjustable work surfaces for sit-to-stand applications and superior power and cable management for easy service access. Industrial workbench systems maximize vertical storage space and offer rugged durability for heavy-duty applications.

eaton.com/furniture



Electronic enclosures



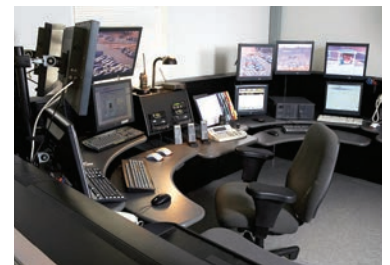
J-Hook color id clips



Spring steel fasteners



Strut systems

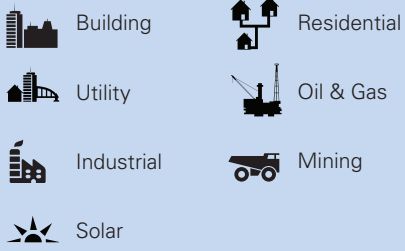


Furniture for technical workspaces



Eaton offers solutions to support, protect, power, enclose and connect critical IT assets.

Industry icon key




 Industrial

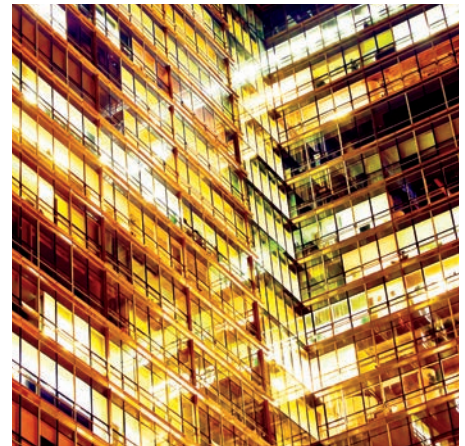



 Solar

At Eaton, we offer a wide array of B-Line series solutions for a variety of industries. Use the icons shown on this page and on our product overview pages to learn which products serve each market.



 Utility power station




 Building construction



 Mining



 Oil and gas



 Residential

Ready to serve you, wherever you are in the world.

No matter the industry, we have the expansive range of products that help contractors, installers, engineers, architects, and more around the world more efficiently meet their electrical, mechanical and communications support system and enclosure subsystem needs.

We operate regional sales offices and distribution centers throughout the United States, Canada, Europe, Middle East, Asia and Australia.

So no matter where you're located – across the U.S. or around the world – you can rely on us for the products and services you need, exactly when you need them.

Eaton's B-Line Division Manufacturing, Distribution, Service and Sales Facilities:

USA

Fontana, California
Elk Grove Village, Illinois
Highland, Illinois
Pinckneyville, Illinois
Troy, Illinois
Reno, Nevada
Sherman, Texas
Worcester, Massachusetts

Canada

Mississauga, Ontario
Calgary, Alberta

Europe

Coventry, England

Middle East

Dammam, Saudi Arabia

Australia

Smithfield, Australia

Asia

Shanghai, China
Seoul, South Korea
Busan, South Korea
Kuala Lumpur, Malaysia
Singapore, Singapore



Global innovation center: Highland, IL

Industry leading certified testing and rapid prototyping innovation center increases value to customers.



With the increasing need to provide customers with the lowest total installed cost solutions, Eaton is committed to bringing new innovative solutions to market even faster with our state-of-the-art innovation center.

Contact us for a personalized tour.

Leading test capabilities

- Cable Tray load testing capabilities that meet IEC and NEMA standards
- Precision mechanical strength and load testing
- Salt spray and accelerated weathering tests

Leading innovation capabilities

- 3D Printing (FDM – fused deposition modeling)
- Digital optical comparator for quality review
- Machining – milling, turning and drilling
- Water jet cutting

At Eaton, we work with our customers to understand their day-to-day challenges so that we can deliver innovative B-Line series solutions, services and tools that help customers minimize complexity, increase efficiency, and maximize their profit.

Eaton.com/Productivity-IQ

U.S. customer service center is staffed Monday through Friday from 7 a.m. to 5 p.m. central standard time.
Eaton.com/contactus

Eaton - United States
509 West Monroe Street
Highland, IL 62249
United States
Phone: 800-851-7415

Eaton - Canada
5925 McLaughlin Road
Mississauga, ON L5R 1B8
Canada
Phone: 800-569-3660

Eaton - Europe
Bldg. 2, Argosy Ct.
Whitley Business Park
Scimitar Way
Coventry, CV3 4GA
United Kingdom
Tel: +44 24 7630 8930

Eaton - Saudi Arabia
PO Box 70160 - Al Khobar - 31952
Kingdom of Saudi Arabia
Phone: +966 503 395 973

Eaton - Singapore
No. 2 Serangoon North Ave. 5
#06-01 Fu Yu Building, 554911
Singapore
Tel: +65- 6645 9888

Eaton - Korea
5 FL, Parkland Building
601, Eonju-ro, Gangnam-gu,
Seoul, 06109
Korea
Tel: +82-2-6380-4062

Eaton
1000 Eaton Boulevard
Cleveland, OH 44122
United States
Eaton.com

© 2019 Eaton
All Rights Reserved
Printed in USA
Publication No. BR311002EN
March 2019 BLPO-19

B-Line Division
509 West Monroe Street
Highland, IL 62249
Phone: 800-851-7415

Eaton.com/b-lineseries

Eaton is a registered trademark.

All other trademarks are property of their respective owners.



Follow us on social media to get the latest product and support information.

