



**Build, maintain or expand
top quality electrical
infrastructures**

**Appleton™ and O-Z/Gedney™ Fittings
for Commercial and Industrial Locations**
Product Overview Brochure



The right electrical fittings to get the work done - fast and right.



Emerson™ delivers high quality fittings that installations rely on to help process our food, clean our water, generate our power and get us from place to place, safely. We offer the industry's broadest selection of fittings for the construction, MRO and OEM markets in industrial, commercial and residential applications.

Our Appleton™ and O-Z/Gedney™ products are manufactured to keep you and your job site safe and efficient. Superior design standards and a wide range of options allows us to meet the needs of a variety of application driven requirements. These products connect your wire, conduit, or cable to make electrical installations safer, more productive and more reliable.

For commercial and industrial locations, Emerson™ solutions ensure power is delivered where you need it.



Commercial and industrial location fittings manufactured with durable materials and consistent construction for easy installation make a difference in the speed and final quality of any electrical job, indoors or outdoors.

[Steel Outlet / Switch Boxes and Covers ▶ p4](#)

[Weatherproof Outlet / Switch Boxes and Covers ▶ p4](#)

[EMT Fittings ▶ p5](#)

[EMT Raintight Fittings ▶ p6](#)

[Conduit Fittings / Rigid IMC ▶ p6](#)

[Conduit Fittings / Rigid IMC Hubs ▶ p7](#)

[Insulated / Grounding Bushings ▶ p8](#)

[Grounding Clamps ▶ p8](#)

[Conduit Outlet Bodies and Moguls ▶ p9](#)

[Cast Outlet and Device Boxes ▶ p10](#)

[Liquidtight Conduit Fittings ▶ p10](#)

[Cord Grips ▶ p12](#)

[Flexible Metal Conduit \(FMC\) and Connectors ▶ p12](#)

[Nonmetallic Cable Connectors ▶ p13](#)

[Service Entrance Heads / Fittings ▶ p13](#)

[Cable Clamps and Straps ▶ p14](#)

Steel Outlet / Switch Boxes and Covers



The best electricians insist on the best products. Durable materials, consistent construction and easy installation all make a difference in the speed and final quality of any wiring job. That is why the best electricians choose our products. Indoors or outdoors, wherever conduit or cable terminates at a switch/outlet box, junction box, lamp holder or fixture, our Appleton™ and O-Z/Gedney™ brands are a sign of professional quality.

Product	Material	Finish	UL LISTED	C UL LISTED	C UL US LISTED	SF [®]	SF [®] US	Ex
Ceiling Fan Boxes	Steel	Zinc Plated	✓					
Round Boxes and Covers	Steel	Zinc Plated	✓					
3-1/4" Octagon Boxes and Extension Ring	Steel	Zinc Plated	✓					
4" Octagon Boxes, Extension Rings and Covers	Steel	Zinc Plated	✓					
4" Square Boxes, Extension Rings and Covers	Steel	Zinc Plated	✓					
4-11/16" Square Boxes, Extension Rings and Covers	Steel	Zinc Plated	✓					
Handy Boxes, Extension Rings and Covers	Steel	Zinc Plated	✓					
4" Octagon Concrete Boxes and Back Plates	Steel	Zinc Plated	✓					
Bar Hangers	Steel	Zinc Plated	✓					
Switch Boxes	Steel	Zinc Plated	✓					
Multigang Switch Boxes and Covers	Steel	Zinc Plated	✓					
Masonry Boxes	Steel	Zinc Plated	✓					
Knockout Blanks and Fixture Stems	Steel, Malleable Iron			✓				
Outlet Box/Switch Box Accessories	Steel	Zinc Plated	✓					
NEER™ Safety Plates and Switch Box Supports	Steel	Zinc Plated						

Weatherproof Outlet / Switch Boxes and Covers



Our Appleton and O-Z/Gedney brand weatherproof boxes, cover and lampholders are marine rated and ideal for use in highly corrosive areas, beaches, docks, pools, or other wet location areas. Use in branch circuit wiring for wet, damp or dry locations. Rugged construction prevents entry of dirt, dust and moisture.

Product	Material	Finish	UL LISTED	C UL LISTED	C UL US LISTED	SF [®]	SF [®] US	Ex
Weatherproof Boxes, Covers, Lampholders and Lighting Fixtures	Aluminum			✓				
One-Gang Weatherproof In-Use Covers with Inserts	Aluminum			✓				
Two-Gang Weatherproof In-Use Covers with Inserts	Aluminum			✓				
Weatherproof Incandescent Fixtures	Aluminum			✓				
Accessories and Replacement Parts	Aluminum			✓				
Non-Metallic Weatherproof Boxes, Covers and Lampholders	PVC, polycarbonate			✓				

EMT Fittings



We offer a complete line of connectors and couplings for EMT conduit. Fittings are available in steel, malleable iron and zinc diecast, using either a compression or set-screw design.

Product	Material	Finish	UL LISTED	C UL LISTED	C UL US LISTED	SF	C SF US	Ex
ETP™ 4000S Series Steel EMT Set Screw Connectors	Steel	Zinc Plated	✓			✓		
ETP™ 5000S Series Steel EMT Set Screw Couplings	Steel	Zinc Plated	✓			✓		
ETP™ 7000S Series Steel EMT Compression Connectors	Steel	Zinc Plated	✓	✓				
ETP™ 6000S Series Steel EMT Compression Couplings	Steel	Zinc Plated	✓	✓				
ETP™ 4000US Series Steel EMT Set Screw Connectors	Steel	Zinc Plated	✓			✓		
ETP™ 5000US Series Steel EMT Set Screw Couplings	Steel	Zinc Plated		✓				
ETP™ 7000US Series Steel EMT Compression Connectors	Steel	Zinc Plated		✓				
ETP™ 6000US Series Steel EMT Compression Couplings	Steel	Zinc Plated		✓				
NEER™ Standard Conduit Locknuts	Steel	Zinc Plated	✓					
O-Z/Gedney™ Type RW Reducing Washers	Steel	Zinc Plated	✓			✓		
Appleton™ Reducing Washers	Steel	Zinc Plated						
NEER™ Reducing Washers and Bushings	Steel	Zinc Plated	✓			✓		
NEER™ EMT Straps	Steel	Zinc Plated	✓			✓		
Appleton™ EMT Transition Couplings	Steel	Zinc Plated	✓					
O-Z/Gedney™ EMT Angle Set Screw Connectors	Steel	Zinc Plated	✓			✓		
O-Z/Gedney™ EMT Angle Compression Connectors	Steel	Zinc Plated	✓			✓		
O-Z/Gedney™ EMT Combination Couplings	Malleable Iron, Steel	Zinc Plated	✓			✓		
O-Z/Gedney™ EMT Clamps and Straps	Malleable Iron, Steel	Zinc Plated	✓			✓		
O-Z/Gedney™ EMT Straps	Malleable Iron	Hit Dip Galvanized				✓		
O-Z/Gedney™ EMT Malleable Iron Straps and Spacers	Steel	Zinc Plated	✓			✓		
O-Z/Gedney™ EMT Adapters	Malleable Iron	Zinc Plated	✓			✓		
NEER™ Zinc Set Screw Connectors and Couplings	Zinc	Natural Finish	✓			✓		
NEER™ Zinc 90°; Gland Compression Connectors	Zinc	Natural Finish	✓			✓		
NEER™ Zinc 90°; Corner Pulling Elbows	Zinc	Natural Finish						
NEER™ Zinc Set Screw Offset Nipples	Zinc	Natural Finish		✓		✓		

EMT Raintight Fittings



UL Listed raintight steel compression connectors and couplings are used for grounding and securing EMT raceways to boxes and enclosures in wet locations.

Product	Material	Finish	UL LISTED	C UL LISTED	C UL US LISTED	SF [®]	SF [®] C US	Ex
ETP™ Raintight 6000GSR Series Gland Compression Couplings	Steel	Zinc Plated			✓			
ETP™ Raintight 7000GSR Series Gland Compression Connectors with or without insulated throat	Steel	Zinc Plated			✓			
NEER™ Zinc Gland Compression Connectors and Couplings	Zinc	Natural Finish	✓			✓		

Conduit Fittings / Rigid IMC



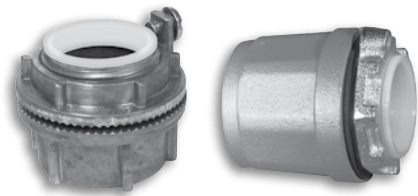
We offer a complete selection of steel, malleable iron and zinc diecast fittings for rigid conduit and IMC. Threaded and threadless, insulated or uninsulated, watertight or general purpose, our conduit fittings, straps and accessories are available in all the sizes and configurations required to connect and support rigid and IMC conduit bonding it to virtually any type of junction box or enclosure.

Product	Material	Finish	UL LISTED	C UL LISTED	C UL US LISTED	SF [®]	SF [®] C US	Ex
O-Z/Gedney™ SCC and SSP Threaded Rigid Conduit and IMC Bolt-On™ Couplings	Malleable Iron	Zinc Electroplate	✓			✓		
O-Z/Gedney™ Threaded Three Piece Couplings and Elbows	Malleable Iron	Zinc Electroplate	✓			✓		
Threaded Enlargers and Nipples	Malleable Iron, Steel	Zinc Electroplate	✓			✓		
O-Z/Gedney™ Type ICC Phenolic Insulating Couplings	Phenolic	Natural Finish						
Threadless Compression and Set-Screw Couplings and Connectors	Malleable Iron	Zinc Electroplate	✓			✓		
O-Z/Gedney™ Type EF and Type EFL Concrete Slab Electroform Inserts	Malleable Iron	Zinc Electroplate	✓			✓		
O-Z/Gedney™ Conduit End Bells	Malleable Iron, Ductile Iron	Hot Dip Galvanized						
NEER™ Bushed Conduit Nipples	Zinc Diecast	Natural Finish	✓			✓		
NEER™ Offset Nipples and Three Piece Couplings	Zinc/ Malleable Iron	Zinc Plated	✓			✓		
NEER™ Pulling Ells	Zinc	Natural Finish	✓			✓		
Appleton™ Beam Clamps, Straps, Clamps and Clamp Backs for Rigid Metal Conduit or IMC	Malleable Iron, Steel	Hot Dip Galvanized, Zinc Electroplate				✓		
O-Z/Gedney™ Clamps, Straps and Clamp Backs for Rigid Metal Conduit or IMC	Aluminum	Epoxy Powder Coat	✓			✓		

Conduit Fittings / Rigid IMC (continued)

Product	Material	Finish	UL LISTED	C UL LISTED	C UL US LISTED	SF [®]	C SF [®] US	Ex
Appleton™ and O-Z/Gedney™ Rigid Metal Conduit, IMC or EMT "K-Clamps"	Malleable Iron,	Hot Dip Galvanized				✓		
Appleton™ and O-Z/Gedney™ RMC, IMC or EMT Hang-On™ Hangers	Steel	Zinc Plated	✓			✓		
Appleton™ Rigid Metal Conduit, IMC or EMT Pipe Hangers	Malleable Iron	Zinc Plated	✓			✓		
O-Z/Gedney™ Rigid Metal Conduit, IMC or EMT Pipe Hangers	Malleable Iron	Hot Dip Galvanized				✓		
Appleton™ TCC Single TCCD Double Conduit Cable Tray Clamps	Malleable Iron	Hot Dip Galvanized	✓					
O-Z/Gedney™ CTC Conduit Cable Tray Clamps	Zinc	Natural Finish	✓			✓		
NEER™ Straps	Aluminum, Steel	Natural Finish, Zinc Plated						
NEER™ Conduit Hangers	Plastic	Natural Finish	✓					
NEER™ Nail Straps	Zinc	Natural Finish	✓			✓		
NEER™ Beam Clamps, Jack Chain and S Hooks	Zinc	Natural Finish	✓			✓		
NEER™ Cable Staples	Aluminum	Natural Finish	✓			✓		
Rigid Conduit and IMC Locknuts	Steel, Aluminum	Natural Finish	✓			✓		
NEER™ Zinc Combination Couplings	Zinc	Natural Finish	✓			✓		
Appleton™ TL Thread and Joint Lubricants								
O-Z/Gedney™ STL Thread and Joint Lubricant								

Conduit Fittings / Rigid IMC Hubs



We offer a selection of steel, malleable iron and zinc diecast hubs for rigid and IMC conduit. Watertight or general purpose versions are available in all the sizes required to connect and support rigid and IMC conduit bonding it to virtually any type of junction box or enclosure.

Product	Material	Finish	UL LISTED	C UL LISTED	C UL US LISTED	SF [®]	C SF [®] US	Ex
O-Z/Gedney™ Type CH Space-Maker Raintight Conduit Hubs	Ductile Iron	Zinc Electroplate	✓			✓		
O-Z/Gedney™ Type CHM Conduit Hubs	Malleable Iron, Steel	Triplecoat ①, Zinc Electroplate	✓			✓		
Appleton™ Threaded Raintight Conduit Hubs With Bonding Screw	Malleable Iron, Steel	Triplecoat ①, Zinc Electroplate	✓			✓		
Appleton™ Threaded Raintight Conduit Hubs	Ductile Iron	Zinc Electroplate	✓			✓		
Appleton™ and O-Z/Gedney™ Globally Certified Raintight Hubs	Zinc, Aluminum	Natural Finish			✓	✓		✓
Appleton™ and O-Z/Gedney™ Aluminum Diecast Watertight Hubs	Aluminum	Natural Finish	✓			✓		
Appleton™ and O-Z/Gedney™ Zinc Diecast Watertight Hubs	Zinc	Natural Finish	✓			✓		

① Triplecoat: zinc electroplate, chromate, epoxy powder coat.

Insulated / Grounding Bushings



Insulated bushings help protect conductors from abrasion during pulling or due to mechanical vibration. They also provide a voltage gradient between the live conductors and ground at the point where conductor insulation is subjected to electrical and mechanical stress.

Product	Material	Finish	UL LISTED	C UL LISTED	C UL US LISTED	SF [®]	SF [®] US	Ex
O-Z/Gedney™ Spec Grade Types A, ABB, BB and BBL Insulating Bushings	Phenolic	Natural Finish	✓			✓		
O-Z/Gedney™ Spec Grade -Types B, HB, AB, RB, SB and SBT Specification Grade Insulated Bushings	Steel, Malleable Iron, Aluminum, Bronze	Zinc Plated, Hot Dip Galvanized, Mechanical Galvanized	✓			✓		
O-Z/Gedney™ Types BLG and HBLG Specification Grade Insulated Grounding Bushings	Steel, Malleable Iron	Zinc Plated, Hot Dip Galvanized	✓			✓		
O-Z/Gedney™ Types ABLG and RBLG Specification Grade Insulated Grounding Bushings	Aluminum, Bronze	Natural Finish	✓			✓		
O-Z/Gedney™ Type SBLG Specification Grade Insulated Grounding Bushings	Steel, Malleable Iron	Zinc Plated	✓			✓		
O-Z/Gedney™ Type 300R Hex Reducing Bushings	Malleable Iron	Zinc Electroplate	✓			✓		
O-Z/Gedney™ Conduit Bushings for Rigid Metal Conduit and IMC	Malleable Iron, Thermoplastic	Zinc Electroplate, Natural Finish	✓			✓		
O-Z/Gedney™ Insulated Grounding Bushing for Threadless and Threaded RMC IMC	Malleable Iron	Zinc Plated	✓			✓		
NEER™ Zinc Bushings	Zinc	Natural Finish	✓			✓		
NEER™ Zinc Grounding Type Insulated Bushings	Zinc	Natural Finish	✓			✓		

Grounding Clamps



Without the right clamps, grounding conduit and meeting code can be a challenge. We supply all the right hardware for any job, designed to simplify installation and lower inventories by handling more sizes of conduit with fewer clamps.

Product	Material	Finish	UL LISTED	C UL LISTED	C UL US LISTED	SF [®]	SF [®] US	Ex
O-Z/Gedney™ Ground Clamps	Aluminum, Bronze, Malleable Iron, Steel, Copper	Tin Plated, Hot Dip Galvanized, Zinc Electroplate, Natural Finish	✓			✓		
O-Z/Gedney™ Ground Connectors	Copper	Natural Finish	✓			✓		
O-Z/Gedney™ XTP Solderless Combination T and Parallel Taps	Copper	Natural Finish	✓					
O-Z/Gedney™ Type XLH Solderless Connectors Combination Type Lugs	Copper	Natural Finish	✓					
O-Z/Gedney™ Type FB Solderless Flexible Braid Connectors	Tinned Copper	Tinned Copper						
NEER™ Ground Clamps	Bronze	Natural Finish	✓			✓		

Conduit Outlet Bodies and Moguls



We provide threaded and set-screw type conduit bodies and moguls for pulling, splicing and maintaining wires installed in EMT, rigid, or IMC conduit. Conduit bodies, covers and gaskets can be ordered separately or as complete assemblies ready for installation. Conduit bodies are available in straight-through feed through, 90° bend and multi-hub designs, all featuring aluminum or iron construction with an attractive, durable epoxy powder coat finish.

Product	Material	Finish	UL LISTED	cUL LISTED	cUL LISTED US	SF [®]	SF [®] US	Ex
Appleton™ Form 35™ Malleable Iron Conduit Outlet Bodies	Malleable Iron	Triplecoat ①	✓			✓		
O-Z/Gedney™ Spec 5 Conduit Outlet Bodies, Covers and Gaskets	Malleable Iron	Triplecoat ①, Hot Dip Galvanized	✓			✓		
Appleton™ FM7™ Conduit Outlet Bodies	Grayloy-Iron, Aluminum	Triplecoat ①	✓			✓		
O-Z/Gedney™ Form 7™ Iron Conduit Outlet Bodies, Covers and Gaskets	Grayloy-Iron	Triplecoat ①, Hot Dip Galvanized						
Appleton™ FM8™ Conduit Outlet Bodies	Grayloy-Iron	Triplecoat ①	✓			✓		
Appleton™ Form 85™ Unilets™ Conduit Outlet Bodies, Covers and Gaskets	Aluminum	Epoxy Powder Coat	✓			✓		
O-Z/Gedney™ Aluminum Conduit Outlet Bodies, Covers and Gaskets	Aluminum	Epoxy Powder Coat	✓			✓		
Appleton™ FM9™ Aluminum Conduit Outlet Bodies Covers Gaskets	Aluminum	Natural Finish	✓			✓		
Appleton™ NEC 6x8x Mogul Conduit Outlet Bodies, Covers and Gaskets	Malleable Iron, Aluminum	Triplecoat ①, Coat	✓			✓		
Appleton™ and O-Z/Gedney™ 6x8x Mogul Conduit Outlet Bodies, Covers and Gaskets	Malleable Iron, Aluminum	Triplecoat ①, Coat	✓			✓		
Appleton™ LBD and LBDN Pulling Fittings	Malleable Iron, Aluminum	Triplecoat ①, Coat	✓			✓		
Appleton™ Pull Boxes with Threaded Hubs and Covers	Steel	Triplecoat ①	✓					
Appleton™ Big Bend Cast Pulling Elbow	Aluminum	Acrylic Paint				✓		
NEER™ Aluminum Threaded Conduit Outlet Bodies, Covers and Gaskets	Aluminum	Epoxy Powder Coat	✓			✓		
NEER™ All-In-One Threaded Conduit Outlet Bodies	Aluminum	Epoxy Powder Coat	✓			✓		
NEER™ All-In-One Multi-Hub Threaded and Set Screw Conduit Outlet Bodies	Aluminum	Epoxy Powder Coat	✓			✓		
NEER™ Aluminum Set Screw Conduit Outlet Bodies and Accessories	Aluminum	Epoxy Powder Coat	✓			✓		

① Triplecoat: zinc electroplate, chromate, epoxy powder coat.

Cast Outlet and Device Boxes



Our cast device boxes incorporate several innovative and useful features. Ridge top construction creates a positive seal against moisture when the cover and gasket are tightened against the body. Wet location receptacle covers provide a gasket that sets around the plug to seal out moisture even when the receptacle is in use. Captive stainless steel screws simplify installation and prevent “freezing.” Hub and cover options meet virtually any requirement. Whatever size box you need, we’re your source.

Product	Material	Finish	UL LISTED	C UL LISTED	C UL US LISTED	SF [®]	SF [®] US	Ex
Appleton™ JB Conduit Outlet Boxes, Covers and Hangers	Malleable Iron, Aluminum	Triplecoat ①, Epoxy Powder Coat	✓					
Appleton™ BKX Round Junction Boxes	Gray Iron	Triplecoat ①				✓		
Appleton™ SEH Conduit Outlet Boxes and Covers	Malleable Iron	Triplecoat ①	✓					
Appleton™ GS Conduit Outlet Boxes, Covers and Hangers	Malleable Iron	Triplecoat ①						
Appleton™ GS Round Junction Boxes	Aluminum	Triplecoat ①				✓		
Appleton™ and O-Z/Gedney™ FS and FD Cast Hub Device Boxes	Malleable Iron, Aluminum	Triplecoat ①, Epoxy Powder Coat	✓			✓		
Appleton™ and O-Z/Gedney™ FS and FD Cast Hub Device Boxes (CSA)	Malleable Iron	Triplecoat ①				✓		
Appleton™ and O-Z/Gedney™ FDB Single and Multiple Gang Cast Device Boxes	Malleable Iron, Aluminum	Triplecoat ①, Epoxy Powder Coat	✓					
Appleton™ and O-Z/Gedney™ FDH Single and Multiple Gang Cast Device Boxes	Malleable Iron	Triplecoat ①	✓					

Liquidtight Conduit Fittings









For providing safe electrical service in areas exposed to weather, water, oil, dirt and other contaminants, we offer a full line of connectors, hubs and accessories for use with liquidtight flexible metal conduit. Aluminum, steel, stainless steel, zinc and nonmetallic connectors are available, with a variety of options including straight, 45° and 90° angle fittings with or without insulated throats, external grounding lugs and stainless steel wire mesh strain relief.

Product	Material	Finish	UL LISTED	C UL LISTED	C UL US LISTED	SF [®]	SF [®] US	Ex
Appleton™ Liquidtight ST™ and STB Insulated Throat Connectors	Steel, Malleable Iron	Zinc Electroplate, Triplecoat ①	✓			✓		
Appleton™ Liquidtight STF Connectors with Threaded Hubs	Steel, Malleable Iron	Zinc Electroplate, Triplecoat ①	✓			✓		
Appleton™ Liquidtight Flexible Metal Conduit Connectors with Wire Mesh Strain Relief	Steel, Malleable Iron	Zinc Electroplate, Triplecoat ①	✓			✓		
Appleton™ Liquidtight ST™ and STB Connectors and External Grounding Lugs	Steel, Malleable Iron	Zinc Electroplate, Triplecoat ①	✓			✓		

① Triplecoat: zinc electroplate, chromate, epoxy powder coat.

Liquidtight Conduit Fittings (continued)

Product	Material	Finish						
Appleton™ Liquidtight STN Connectors for Liquidtight Flexible Metal Conduit	Steel, Malleable Iron	Zinc Electroplate, Triplecoat ①	✓			✓		
Appleton™ Aluminum Liquidtight ST™ Series Connectors with Plain Throat	Aluminum	Natural Finish	✓			✓		
Appleton™ Liquidtight STNM™ Type A Flexible Nonmetallic Conduit Connectors	Steel	Natural Finish	✓			✓		
Appleton™ PG and ISO Metric Thread Liquidtight Insulated Connectors	Steel, Malleable Iron, Aluminum	Zinc Electroplate, Triplecoat ①, Natural Finish	✓			✓		
Appleton™ Liquidtight Accessories	Steel, Neoprene, Aluminum, Stainless Steel	Natural Finish	✓			✓		
O-Z/Gedney™ 4Q Straight Liquidtight Connectors	Malleable Iron	Zinc Electroplate	✓			✓		
O-Z/Gedney™ 4Q 45°; and 90°; Liquidtight Connectors	Malleable Iron	Zinc Electroplate	✓			✓		
O-Z/Gedney™ 4Q-FM Liquidtight Combination Couplings	Malleable Iron	Zinc Plated	✓			✓		
O-Z/Gedney™ 4Q-WM Wire Mesh Liquidtight Connectors with Wire Mesh Strain Relief	Malleable Iron	Zinc Electroplate	✓			✓		
O-Z/Gedney™ 4Q Liquidtight Sealing Ring Assemblies	Steel	Zinc Electroplate						
O-Z/Gedney™ Ground-Tite™ 4Q Grounding Liquidtight Connectors	Malleable Iron	Zinc Electroplate	✓			✓		
O-Z/Gedney™ Ground-Tite™ 4Q 45°; Grounding Liquidtight Connectors	Malleable Iron	Zinc Electroplate	✓			✓		
O-Z/Gedney™ Ground-Tite™ 4Q 90°; Grounding Liquidtight Connectors	Malleable Iron	Zinc Electroplate	✓			✓		
O-Z/Gedney™ Ground-Tite™ 4Q Liquidtight Combination Couplings	Malleable Iron	Zinc Electroplate	✓			✓		
Appleton™ and O-Z/Gedney™ 4QS Straight, 45°; and 90°; Steel Liquidtight Fittings	Steel, Malleable Iron	Zinc Plated	✓			✓		
Appleton™ and O-Z/Gedney™ 4QSS Straight, 45°; and 90°; Stainless Steel Liquidtight Connectors	Stainless Steel	Natural Finish			✓			
NEER™ Zinc Straight Liquidtight Connectors	Zinc	Natural Finish	✓			✓		
NEER™ Zinc 90°; Liquidtight Connectors	Zinc	Natural Finish	✓			✓		
NEER™ Nylon Liquidtight Connectors	Nylon	Natural Finish	✓			✓		

① Triplecoat: zinc electroplate, chromate, epoxy powder coat.

Cord Grips



Cord grip connectors are used to secure and terminate non-armored flexible electrical cable to a threaded entry in a box or enclosure. They are available in straight and 90° versions in a wide range of cable and hub sizes, with or without wire mesh grips for strain relief and pullout resistance.

Product	Material	Finish	UL LISTED	cUL LISTED	cUL US LISTED	SF	SF US	Ex
Appleton™ CG Series	Aluminum, Steel	Natural Finish	✓			✓		
O-Z/Gedney™ Grip-Tite™ Strain Relief Connectors	Malleable Iron	Zinc Plated	✓			✓		
O-Z/Gedney™ Gold Seal Strain Relief Connectors	Malleable Iron	Hot Dip Galvanized	✓			✓		
O-Z/Gedney™ Type CGA Aluminum Straight Strain Relief Cord Grip Connectors	Aluminum	Natural Finish	✓			✓		
O-Z/Gedney™ Type CGA Aluminum 90°; Strain Relief Cord Grip Connectors	Aluminum	Natural Finish	✓			✓		
O-Z/Gedney™ CGA Aluminum Straight and 90°; Strain Relief Cord Grip Connectors with wire mesh strain relief	Aluminum	Natural Finish						
Appleton™ Aluminum and Steel Liquidtight Strain Relief Cord and Cable Connectors	Aluminum, Steel	Natural Finish	✓			✓		
Appleton™ Stainless Steel and Aluminum Liquidtight Cable/ Cord Connectors	Stainless Steel, Aluminum	Zinc Plated						
Appleton TC Series Tray Cable Connectors	Aluminum	Natural Finish					✓	✓

Flexible Metal Conduit (FMC) and Non-Metallic Flexible Conduit (NMFC) Connectors



For many applications, armored and metal clad cables provide simpler, more cost effective installation than traditional non-armored cable in conduit. Cable manufacturers have developed many new types of armored and metal clad cable to meet the increasing demand, creating a need for innovative connection solutions to accommodate the wide range of cable types and sizes on the market today. From simple twist-on connectors to watertight gland type connectors, we are the only source you need to connect and terminate any type of armored metal clad cable, in any application.

Product	Material	Finish	UL LISTED	cUL LISTED	cUL US LISTED	SF	SF US	Ex
O-Z/Gedney™ Type PK Armored/Metal Clad Cable Connectors	Malleable Iron	Zinc Electroplate	✓			✓		
O-Z/Gedney™ Type PG Armored/Metal Clad Cable Connectors	Malleable Iron	Zinc Plated	✓			✓		
O-Z/Gedney™ Cable Connectors	Malleable Iron	Zinc Plated	✓			✓		
Appleton™ Non-metallic Sheathed Cable Connectors	Malleable Iron	Zinc Plated	✓					
Appleton™ Armored Cable and Flexible Metal Conduit Connectors	Malleable Iron	Hot Dip Galvanized	✓			✓		
Appleton™ and O-Z/Gedney™ SPEED-LOCK™ Box Connectors and Snap Connectors	Malleable Iron	Zinc Electroplate	✓			✓		
NEER™ Cable and Conduit Connectors	Zinc	Natural Finish	✓			✓		
NEER™ Cable Connectors	Zinc	Natural Finish	✓			✓		
NEER™ Anti-Short Bushings	Plastic	Natural Finish						

Nonmetallic Cable Connectors



Our nonmetallic cable connectors are used to ground and secure nonmetallic sheathed cable to boxes and enclosures. A thermoplastic cam lock version is available, as well as a malleable iron version with screws that can additionally be used to ground and secure service entrance cable to boxes and enclosures.

Product	Material	Finish	UL LISTED	C UL LISTED	C UL US LISTED	SFA	SFA C US	Ex
NEER™ Connectors for Nonmetallic Sheathed Cable	Zinc	Natural Finish	✓			✓		

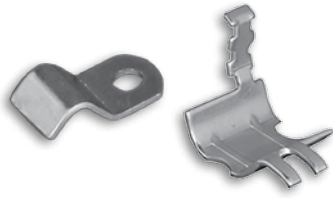
Service Entrance Heads / Fittings



Look up, and you will find our products at the electrical service entrance of all kinds of residential and commercial buildings. We offer a complete line, from service entrance caps and straps to flashings, connectors, wire holders, pulling ells and more – everything the contractor needs to bring electricity into the building while keeping the weather out.

Product	Material	Finish	UL LISTED	C UL LISTED	C UL US LISTED	SFA	SFA C US	Ex
O-Z/Gedney™ Service Entrance Heads	Malleable Iron	Hot Dip Galvanized	✓			✓		
O-Z/Gedney™ Watertight Service Entrance and UF Cable Connectors	Malleable Iron	Zinc Electroplate	✓					
O-Z/Gedney™ Non-Watertight Service Entrance Connectors	Malleable Iron	Mechanical Galvanized, Zinc Plated	✓			✓		
Appleton™ Service Entrance Cable Connectors	Malleable Iron, Cast Iron	Hot Dip Galvanized, Mechanical Galvanized				✓		
Appleton™ Nonmetallic Sheathed and Service Entrance Cable Connectors	Malleable Iron, Steel	Zinc Plated, Zinc Electroplate	✓			✓		
O-Z/Gedney™ Round Service Entrance Straps and Nails	Zinc	Natural Finish	✓			✓		
NEER™ Aluminum Service Entrance Pulling Ells	Aluminum	Epoxy Powder Coat	✓			✓		
NEER™ Aluminum Entrance Caps	Aluminum	Natural Finish	✓	✓				
NEER™ Service Entrance Caps and Straps	Zinc	Natural Finish	✓			✓		
NEER™ PVC Entrance Caps	PVC	Natural Finish						
NEER™ Zinc Two Screw Connectors For Service Entrance Cable	Zinc, Steel	Natural Finish, Zinc Plated	✓			✓		
NEER™ Service Entrance Flashings	Steel	Hot Dip Galvanized	✓					
NEER™ Service Entrance Wire Holders	Steel	Zinc Plated	✓	✓				
NEER™ Service Entrance Connectors	Steel	Zinc Plated	✓					
NEER™ Duct Sealing Compound	Fibrous Compound		✓			✓		

Cable Clamps and Straps



One of the weak links in an electrical system can be the connection point between a box or enclosure and a run of flexible cord, nonmetallic sheathed cable, armored cable or flexible metal conduit. We provide easy-to-install products built with the rugged reliability needed to relieve the stresses and strains concentrated at these termination points.

Product	Material	Finish	UL LISTED	cUL LISTED	cUL US LISTED	SF [®]	SF [®] C US	Ex
Appleton™ Bus Drop Cable and Clamps	Malleable Iron	Mechanical Galvanized	✓					
NEER™ Cable Straps	Aluminum	Natural Finish	✓			✓		

Install and maintain quality electrical infrastructure with the most durable electrical products.



Keeping you and your job site safe and efficient.



Appleton™ and O-Z/Gedney™ are cornerstone brands of Emerson's Electrical Apparatus and Lighting business; trusted worldwide to make electrical installations safer, more productive and more reliable.

United States (Headquarters)
Appleton™ Grp LLC
9377 W. Higgins Road
Rosemont, IL 60018
United States
T +1 800 621 1506

Europe
ATX SAS
Espace Industriel Nord
35, rue André Durouchez,
CS 98017
80084 Amiens Cedex 2, France
T +33 3 2254 1390

Canada
EGS Electrical Group Canada Ltd.
99 Union Street
Elmira ON, N3B 3L7
Canada
T +1 888 765 2226

Asia Pacific
EGS Private Ltd.
Block 4008, Ang Mo Kio Ave 10,
#04-16 TechPlace 1,
Singapore 569625
T +65 6556 1100

Latin America
EGS Comercializadora Mexico S
de RL de CV
Calle 10 N°145 Piso 3
Col. San Pedro de los Pinos
Del. Álvaro Obregon
Ciudad de México. 01180
T +52 55 5809 5049

Australia Sales Office
Bayswater, Victoria
T +61 3 9721 0348

China Sales Office
Shanghai
T +86 21 3338 7000

Middle East Sales Office
Dammam, Saudi Arabia
T +966 13 510 3702

Chile Sales Office
Las Condes
T +56 2928 4819

India Sales Office
Chennai
T +91 44 3919 7300

Korea Sales Office
Seoul
T +82 2 3483 1555

 [Emerson.com](https://www.emerson.com)

 [LinkedIn.com/company/emerson](https://www.linkedin.com/company/emerson)

The Emerson logo is a trademark and service mark of Emerson Electric Co. Appleton, O-Z/Gedney, NEER and ETP are registered trademarks of Appleton Grp LLC. All other marks are the property of their respective owners. © 2018 Emerson Electric Co. All rights reserved.



CONSIDER IT SOLVED™