



# Innovation Summit



## For Plant Modernization & Smart Machines

Together with Rockwell Automation and our technology partners, Agilix Solutions offers exceptional products to optimize your industrial operations.

Attend this half-day update to learn how our safety, sensors, drives and controllers can be integrated to meet your business needs. You will be able to engage with product specialists to learn about key products and services to help solve your current business challenges - from application to enterprise.

### WHO SHOULD ATTEND:

- Control Engineers
- Engineering Managers
- IT Personnel Involved in Automation Integration
- Maintenance Managers
- Production/ Operation Managers

### SEMINAR INCLUDES:

- **Continental Breakfast**  
(starting at 7:30 AM)
- **Lunch**  
(starting at 12 PM)

SCAN HERE  
TO REGISTER FOR  
YOUR CLASS!



Choose the location and session that works best with your schedule.

#### » Thursday, February 12 – St. Louis, MO

- Agilix Solutions – Customer Center  
2023 Westport Center Drive, St. Louis, MO 63146
- 8 a.m. to 12 p.m.

#### » Wednesday, February 18 – Quincy, IL

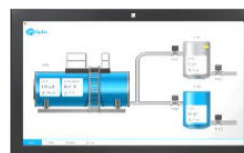
- Agilix Solutions  
1700 North 45<sup>th</sup> Street, Quincy, IL 62305
- 8 a.m. to 12 p.m.

#### » Tuesday, February 24 – Columbia, MO

- Holiday Inn East  
915 Post Way, Columbia, MO 65201
- 8 a.m. to 12 p.m.

#### » Tuesday, March 3 – Washington, MO

- Hummingbird Club  
5 Penn St., Washington, MO 63090
- 8 a.m. to 12 p.m.



To Register: Please visit <https://www.goagilix.com/training-events/>

**goAgilix.com**



AUTOMATION



**Rockwell  
Automation**





# Innovation Summit

## For Plant Modernization & Smart Machines



Join Agilix Solutions for this session as we highlight key products and technologies presented at Automation Fair.

- Safety, Sensors & Networks
- Safety Controllers & IO
- Drives
- Industrial Networking
- Motion Control
- Productivity Tools
- Software
- Process
- Smart Sensors
- Digital Transformation



[goAgilix.com](http://goAgilix.com)



AUTOMATION

